

### **Superstructure Works Measures for Public Safety**

#### **Introduction**

Although the general site safety situation has been improved after the setting up of the Site Monitoring Section, the number of incidents of falling objects from buildings under construction remains high. Such incidents have highlighted the need to enhance precautionary measures at construction sites where superstructure works are being carried out, to better protect the public from falling objects.

#### **General Requirements**

2. A properly built and maintained hoarding/covered walkway is always required to protect the public near building sites. General guidance on the provision of such structure can be found in PNAP 75.
3. Additional protection for the public near building sites undergoing superstructure works, except where the condition in paragraph 4(a) or (b) applies, should include the following precautionary measures : -

#### **During Erection of the Structural Frame of a Building**

- (a) A steel covered walkway and a steel catch platform at low level similar to those provided for demolition sites should be provided. Standard details of a reusable steel covered walkway and steel catch platform are attached in Appendix A for general reference.

#### **Protective Screen on the Facade of a Building**

- (b) The building under construction should be provided on its facade with a screen consisting of two layers (with overlaps, and fixed to scaffold at regular intervals): an inner net of heavy duty nylon netting with thread diameter of not less than 3.5 mm and a maximum centre to centre spacing of 50 mm, and an outer net of fine nylon netting. However, in order not to impede the smooth operation of the construction programme, the double layer netting may be removed locally during the installation of external cladding/curtain wall.
4. The above additional preventive measures are not required if a building under construction is:

/ (a) .....

- (a) under 30 metres in height, or
- (b) set back from the site boundary such that an inclined projection plane from the top outer edge of the building at 10 degree from the vertical does not go beyond the site boundary at ground level.

### **Alteration and Addition Works and Concrete Repair Works**

5. Where any alteration and addition works or concrete repair works are carried out at the external walls of an existing building, the protection measures in paragraph 3(a) and (b) should also be provided unless the exemption condition in paragraph 4(a) or (b) is fulfilled. Also, the provision of steel catch platform and protective screen may only be required at the locations where the works are to be carried out. Protective measures required in paragraph 3(a) and (b) may be waived if it can be demonstrated that the procedures and alternative precautionary measures used for the alteration and addition works or concrete repair works are sufficient to protect the public.



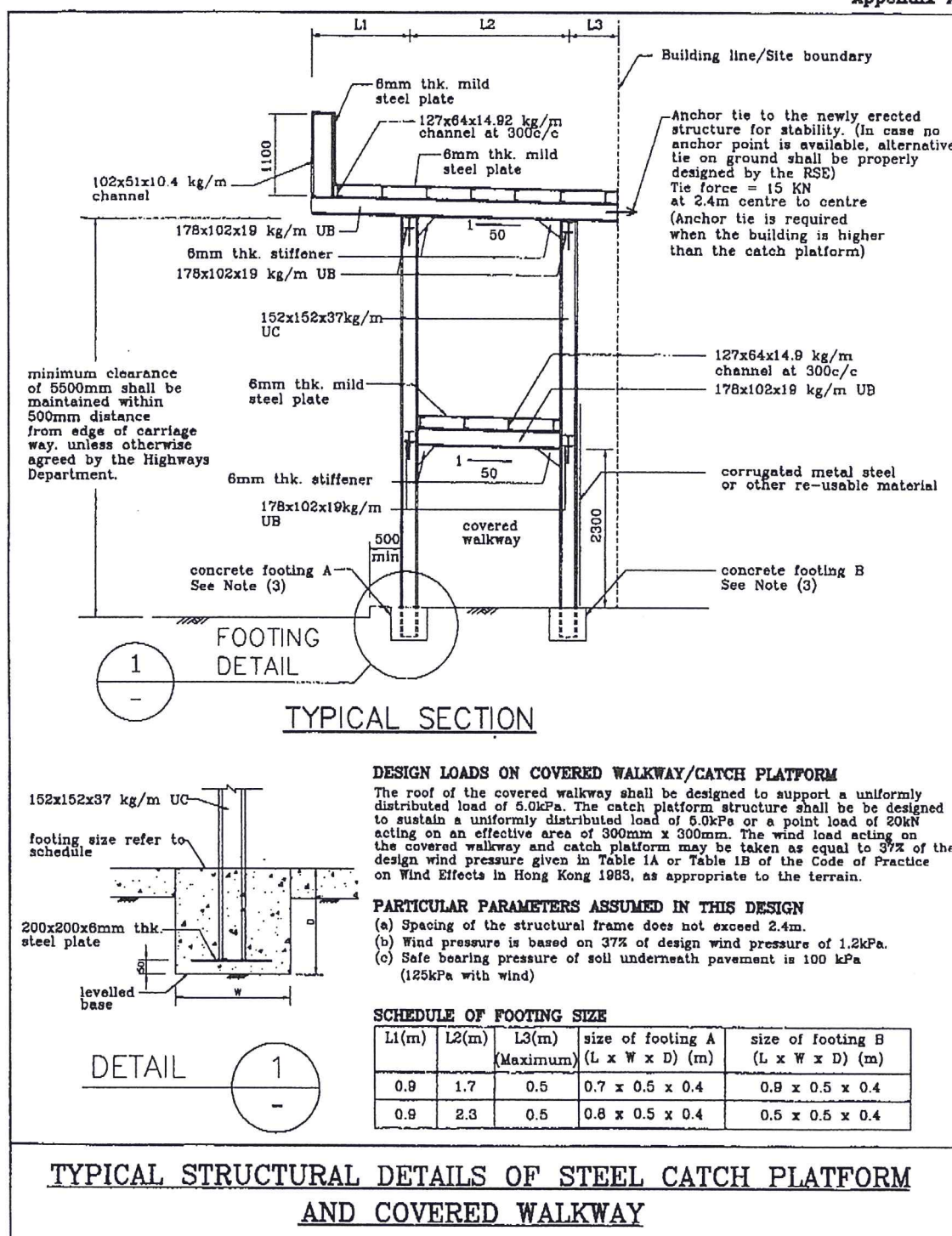
( H W CHEUNG )  
Building Authority

Ref. : BD GP/BORD/71

First issue May 1998

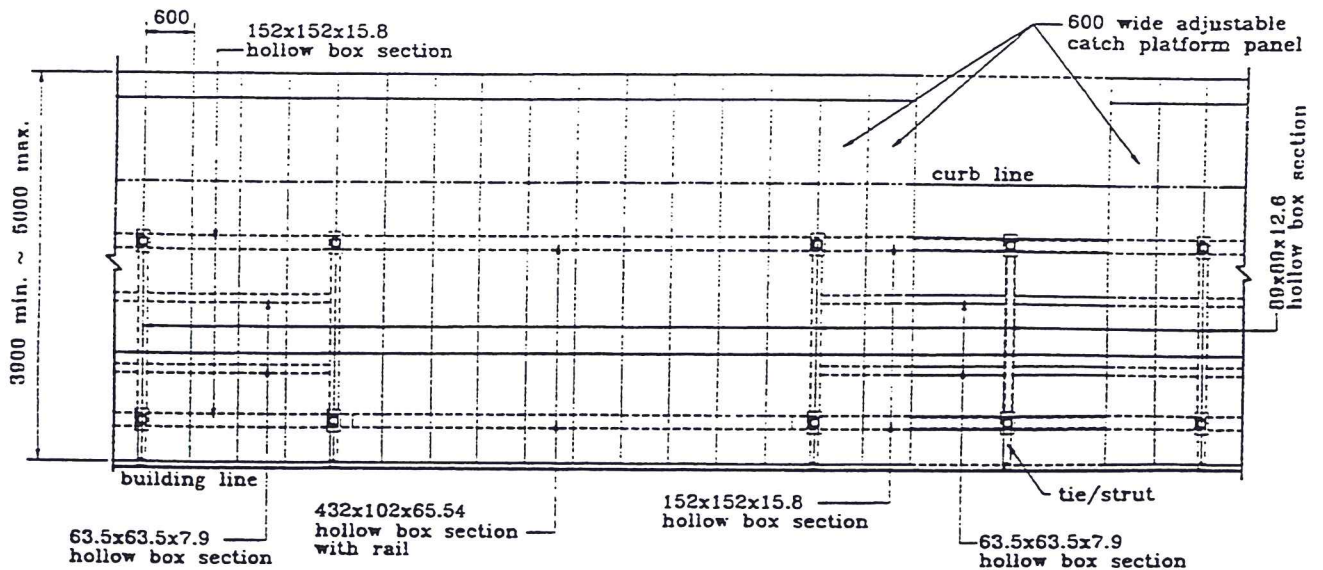
This revision February 2003 (AD/NB2) (New paragraph 2 added and paragraphs 3 & 4 renumbered)

Index under : Superstructure Works



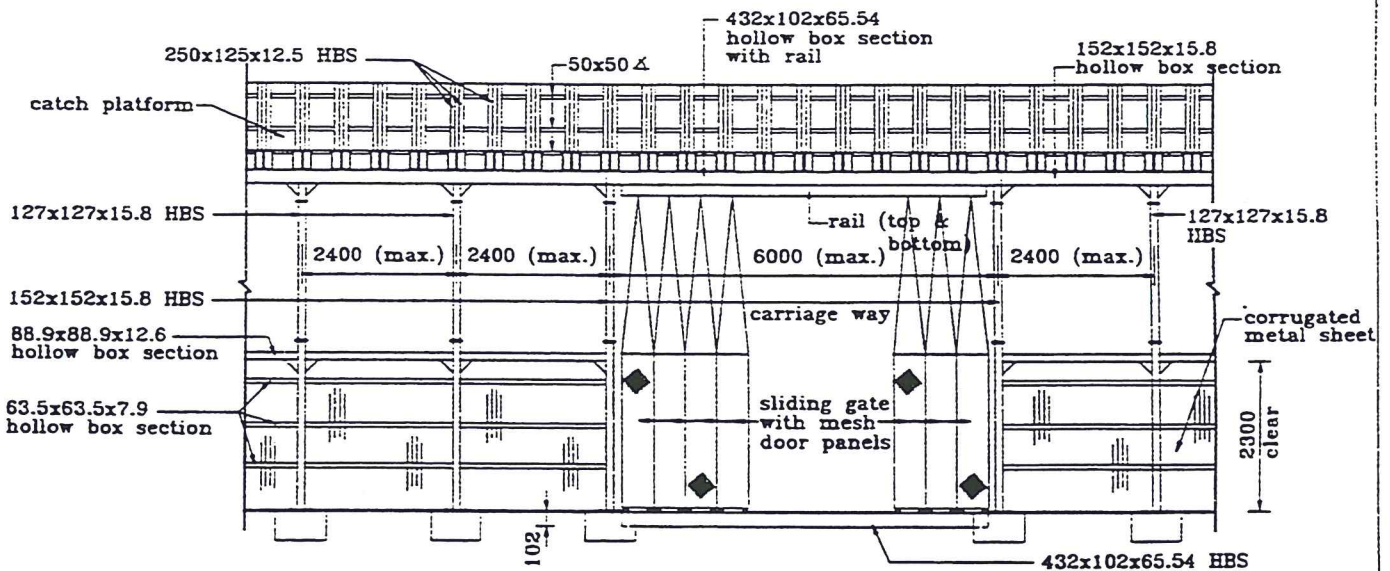
- NOTE: (1) - REFER TO PNAP 75 FOR GUIDELINES GOVERNING THE DESIGN OF COVERED WALKWAY.  
(2) - AP/RSE SHOULD PROVIDE PRECISE DETAILS TO SUIT SPECIFIC CIRCUMSTANCES OF INDIVIDUAL SITES.  
(3) - THE SIZE OF THE FOOTING IS FOR GENERAL REFERENCE ONLY WHEN CONCRETE IS USED. WHERE THE WIDTH OF THE FOOTPATH IS NARROW, THE DESIGNER SHOULD CONSIDER ADOPTING OTHER SUITABLE DESIGN AND BUILDING MATERIAL SUCH THAT THE TOTAL WIDTH, 2W, OF THE FOOTINGS A AND B SHOULD NOT BE MORE THAN HALF OF THE WIDTH OF THE FOOTPATH IN ORDER NOT TO IMPEDE ACCESS TO UNDERGROUND PUBLIC SERVICES.  
(4) - THE FOOTINGS SHALL NOT REST ON OR ENCLOSE ANY UNDERGROUND UTILITIES. IN ANY CASE, THE UTILITY UNDERTAKINGS SHOULD BE CONSULTED REGARDING LOCATIONS OF UNDERGROUND UTILITIES.





## PLAN AT CATCH PLATFORM LEVEL

Note: 1, unless otherwise stated, all column to be 127x127x15.8 HBS.



## ELEVATION

**REUSABLE STEEL CATCH PLATFORM AND  
COVERED WALKWAY (SHEET 2 OF 2)**