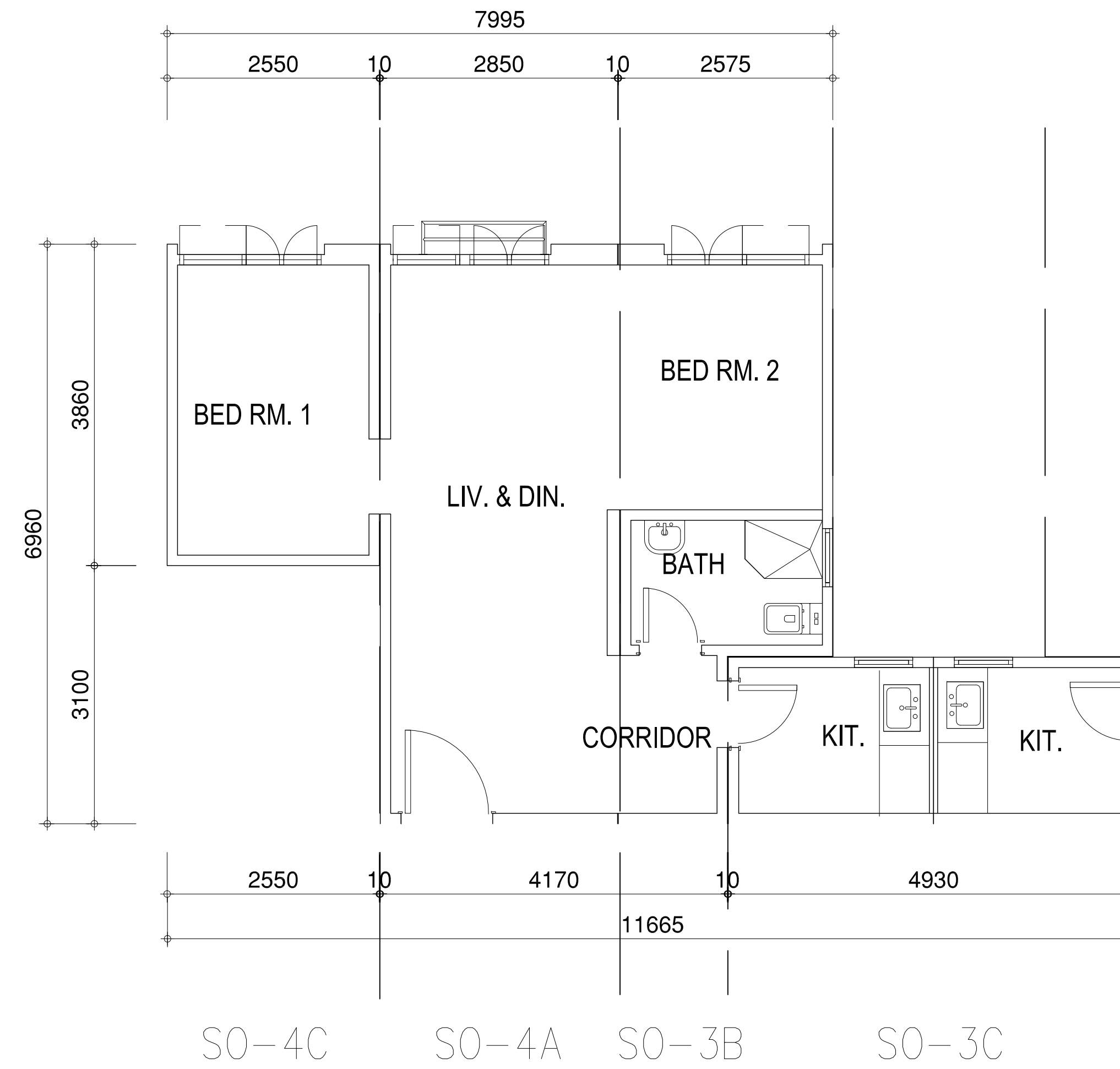
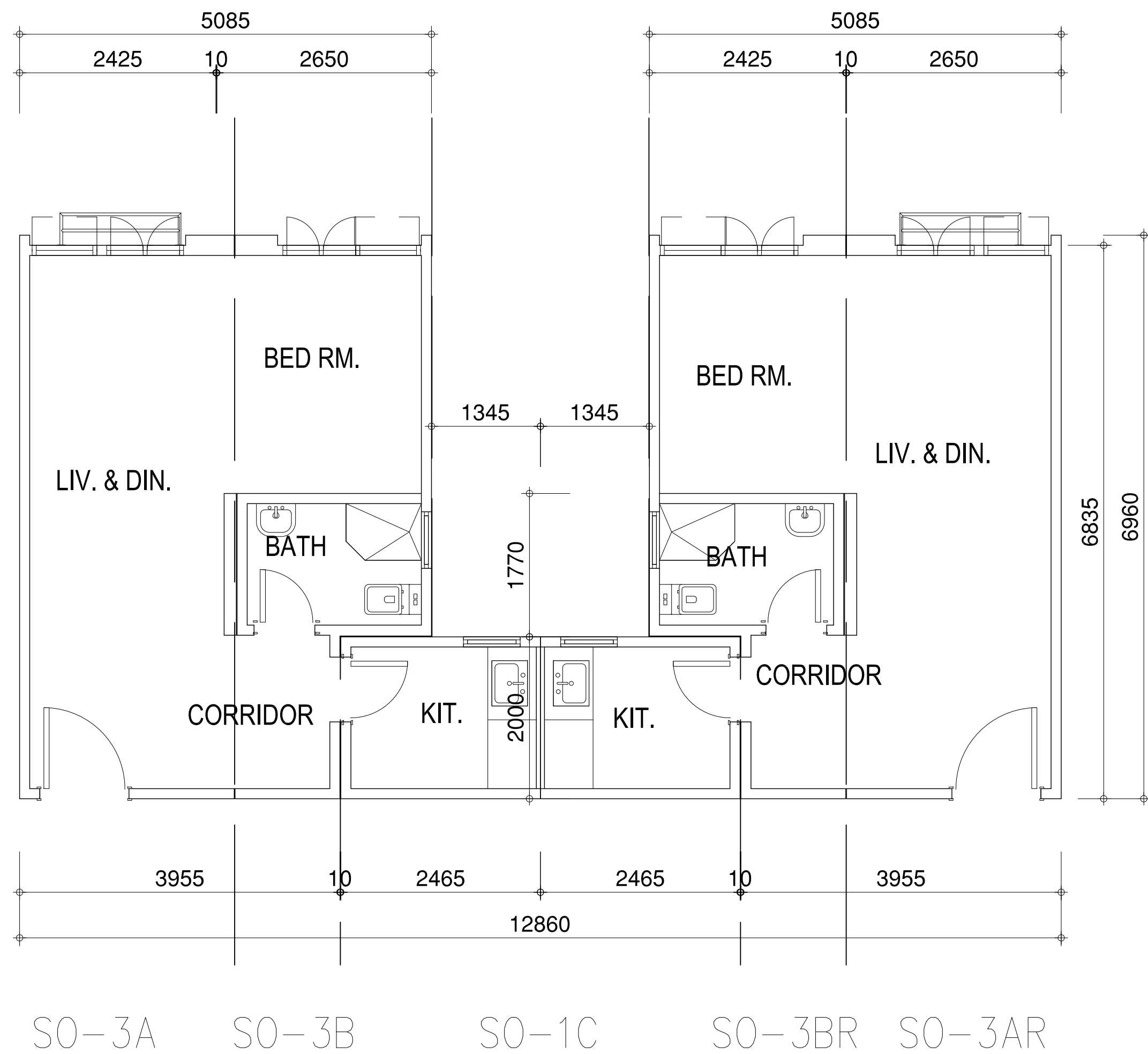


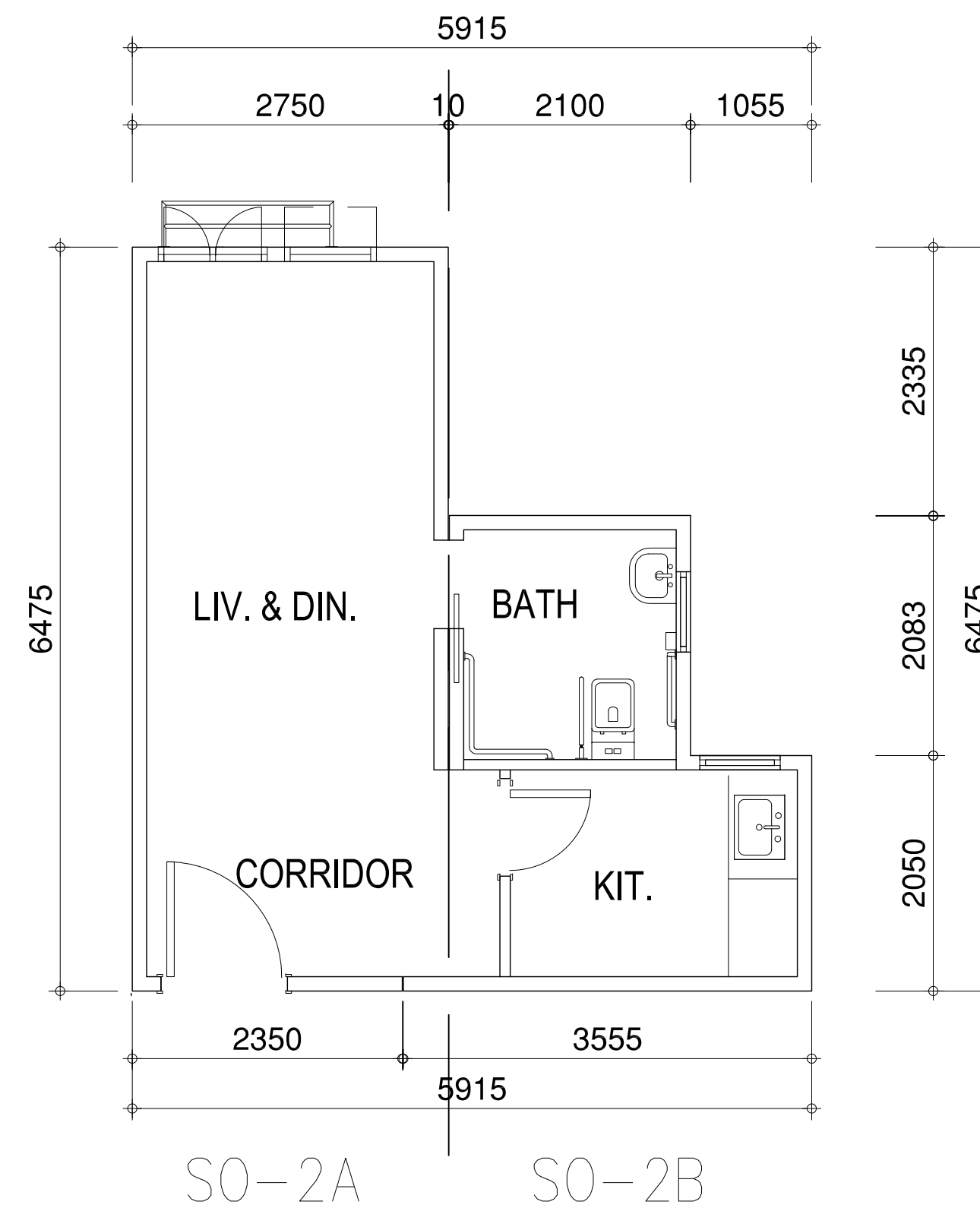
LAYOUT PLAN FOR UNIT TYPE A
MODULE TYPE SO-1A & SO-1B
SO-1AR (MIRRORED) & SO-1BR (MIRRORED)



LAYOUT PLAN FOR UNIT TYPE C
MODULE TYPE SO-3B, SO-4A, SO-4C
SO-3BR, SO-4AR, SO-4CR (MIRROR), SO-3C



LAYOUT PLAN FOR UNIT TYPE B
MODULE TYPE SO-3A, SO-3AR (MIRRORED),
SO-3B, SO-3BR (MIRRORED), SO-1C



LAYOUT PLAN FOR UNIT TYPE D
MODULE TYPE SO-2A & SO-2B

B.D. REF. NO.: BD/MIC/

F.S.D. REF. NO.:

NOTES

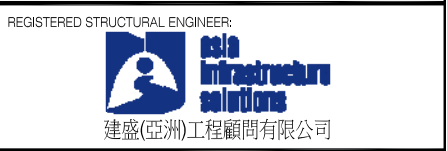
(1) Do not scale drawing. Figure dimensions are to be followed. Read this drawing in conjunction with all other relevant drawings and specification. The cabinet shall be modified immediately if any discrepancy found therein.

This drawing shall not be used for construction purposes unless otherwise certified. The contractor shall verify all dimensions on site prior to commencement of work.

Unless otherwise specified, all installation shown in hidden line are existing and shall be retained.

Unless otherwise specified, all installation shown in solid line shall be new.

REVISIONS		REVISION AND DATE		REVISION AND DATE	
NO.	DESCRIPTION	DATE	BY	DATE	BY



PROJECT NO. T-23765

PROJECT
MODULAR INTEGRATED
CONSTRUCTION (MIC)
SYSTEM

DRAWING TITLE
TYPICAL FLOOR PLAN

SCALE 1:50 PAPER SIZE A1

DRAWING NO. GP-GENERAL PLAN REV. -