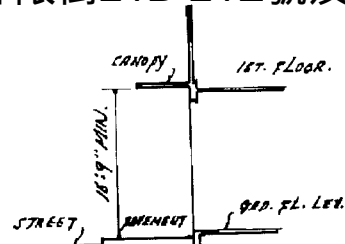


N.K.I.L. 1987

SEC. A

On Fai Building, 21B-21E
Boundary Street & 59-63 Yu Chau
Street, Kowloon
安發大廈, 界限街21B-21E號及汝州
街59-63號



CORNER SPLAY
CLEAR HEIGHT - 16'-9"

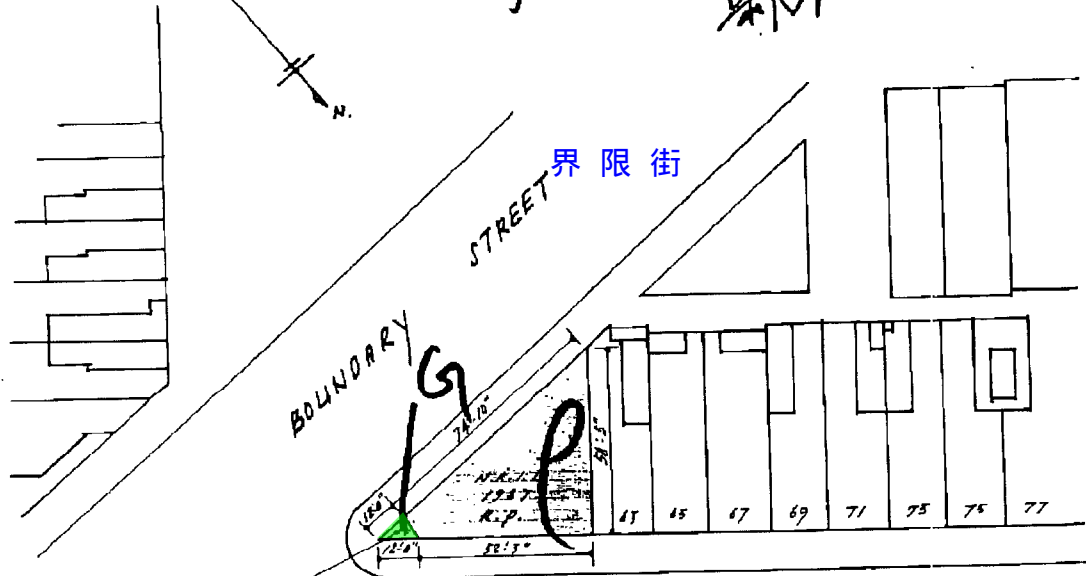
SECTION
SCALE: 20 FT. = 1 INCH.

E. T. Kennard

Principal Government Building Surveyor

m1097083

Handwritten Chinese notes: 另修... 果...



N.K.I.L. 1987 SEC. A
CORNER SPLAY TO BE
DEDICATED TO THE PUBLIC
FOR THE PURPOSE OF PASSAGE.

汝州街
YU CHAU STREET

RECEIVED

SCALE: 50 FT. = 1 IN.

MAY 1974

MAY 10 1974