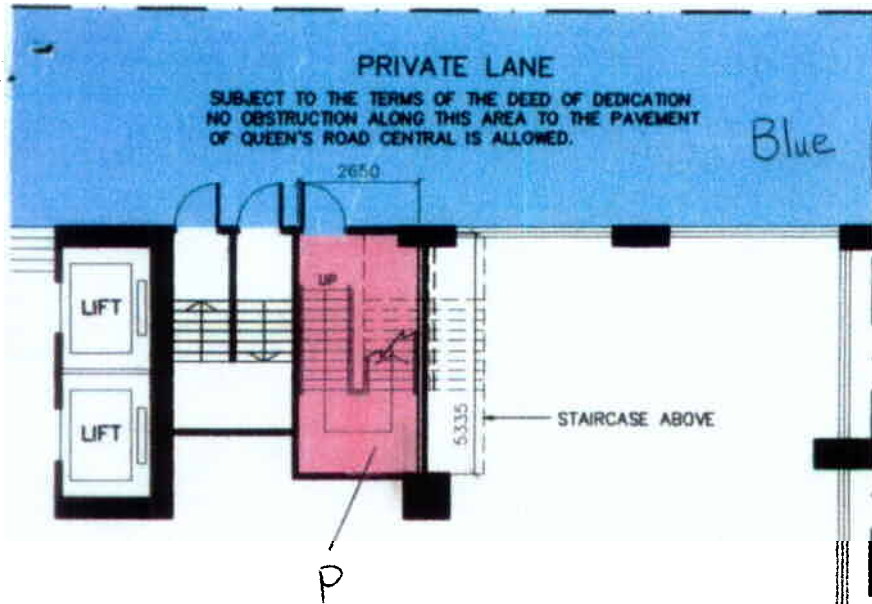


B.D. REF NO. : 2-3/2310/96/3

106  
set II



1 - 3 PEDDER STREET  
21 - 27 QUEEN'S RD. CENTRAL  
M.L. 3R.P., M.L. 5R.P., M.L. 7R.P.

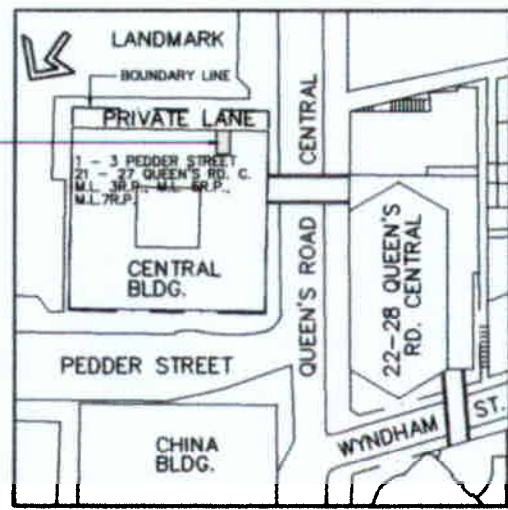


G/F PART PLAN

*M/N 785234*

**LEGEND :**  
 AREA DEDICATED FOR PUBLIC PASSAGE  
 (DEDICATED AREA 14,019 m<sup>2</sup>)

*10/7/97*  
*1998 SEP 16 P 3 28*  
*1998 SEP 16 P 3 28*



BLOCK PLAN SCALE 1 : 1500

皇后大道中

QUEEN'S ROAD CENTRAL



UBM7785234 (1/1)

10/7/97

**P&T Architects and Engineers Ltd**  
 25/F G/F Building  
 180 Gloucester road HK  
 Telephone: 5738576  
 Fax: 852-6-8913834

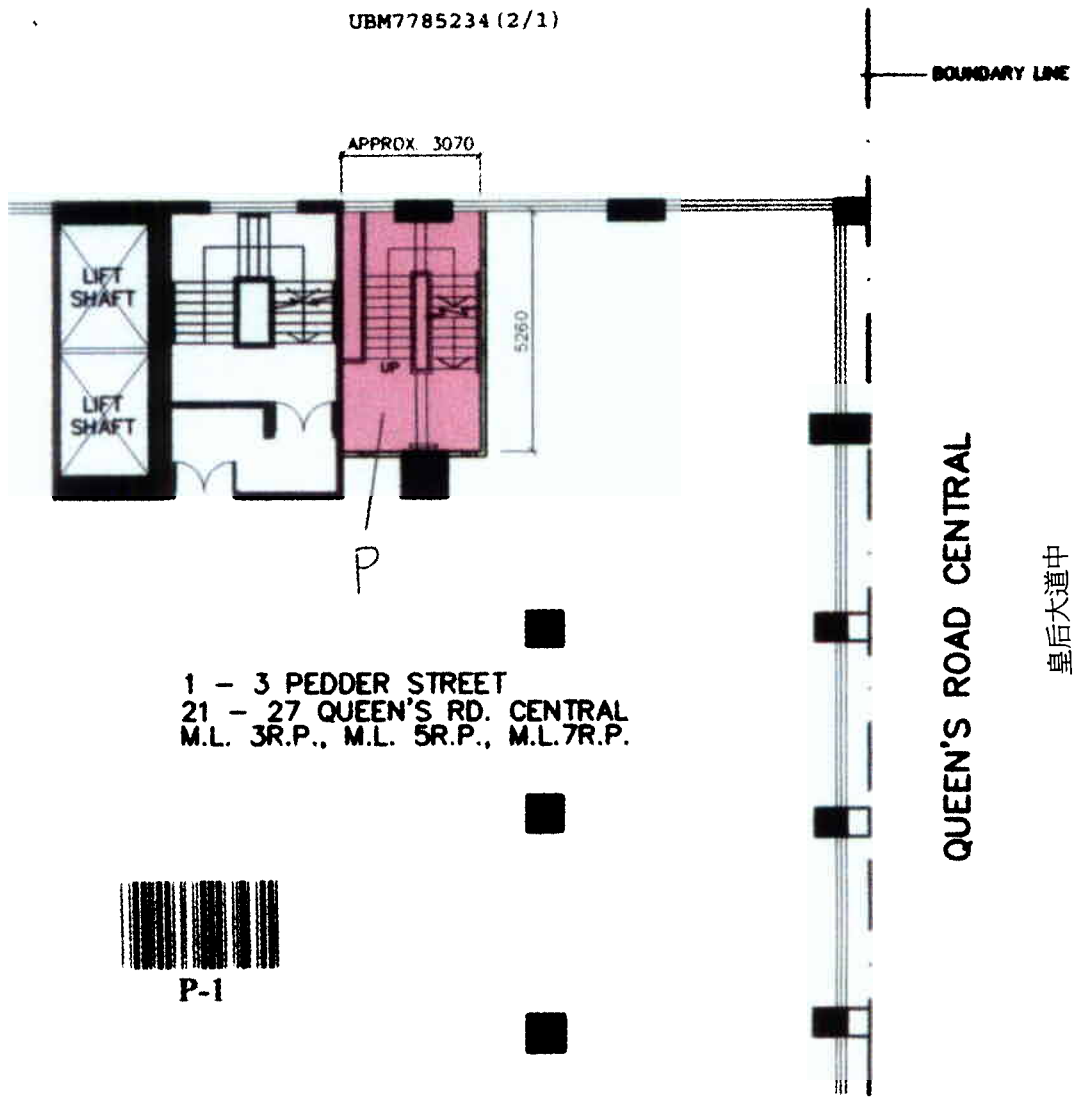
**1 - 3 PEDDER STREET  
 21 - 27 QUEEN'S RD. CENTRAL**

**G/F DEDICATED AREA  
 FOR PUBLIC PASSAGE**

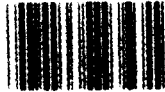
Scale	1:150	Drawing No.	D - 01
Date	MAY '96		
Job No.	2902	A	



UBM7785234 (2/1)



1 - 3 PEDDER STREET  
 21 - 27 QUEEN'S RD. CENTRAL  
 M.L. 3R.P., M.L. 5R.P., M.L. 7R.P.



P-1

### 1/F PART PLAN

M/N 7785234

1-3 PEDDER STREET AND 21-27 QUEEN'S ROAD CENTRAL, H. K.

香港畢打街 1-3 號, 皇后大道中 21-27 號

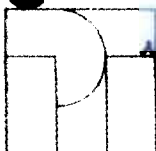
#### LEGEND :

 AREA DEDICATED FOR PUBLIC PASSAGE  
 (DEDICATED AREA = 15.900 m<sup>2</sup>)

*Richard*



1996 SEP 19 3:20



**P&T Architects**  
 P&T Engineers Ltd

25/F 608 Building  
 160 Gloucester road HK  
 Telephone: 2798870  
 Fax: 282-5-8913034

**1 - 3 PEDDER STREET**  
**21 - 27 QUEEN'S RD. CENTRAL**

**1/F DEDICATED AREA**  
**FOR PUBLIC PASSAGE**

Scale

1:150

Date

MAY '96

Job No.

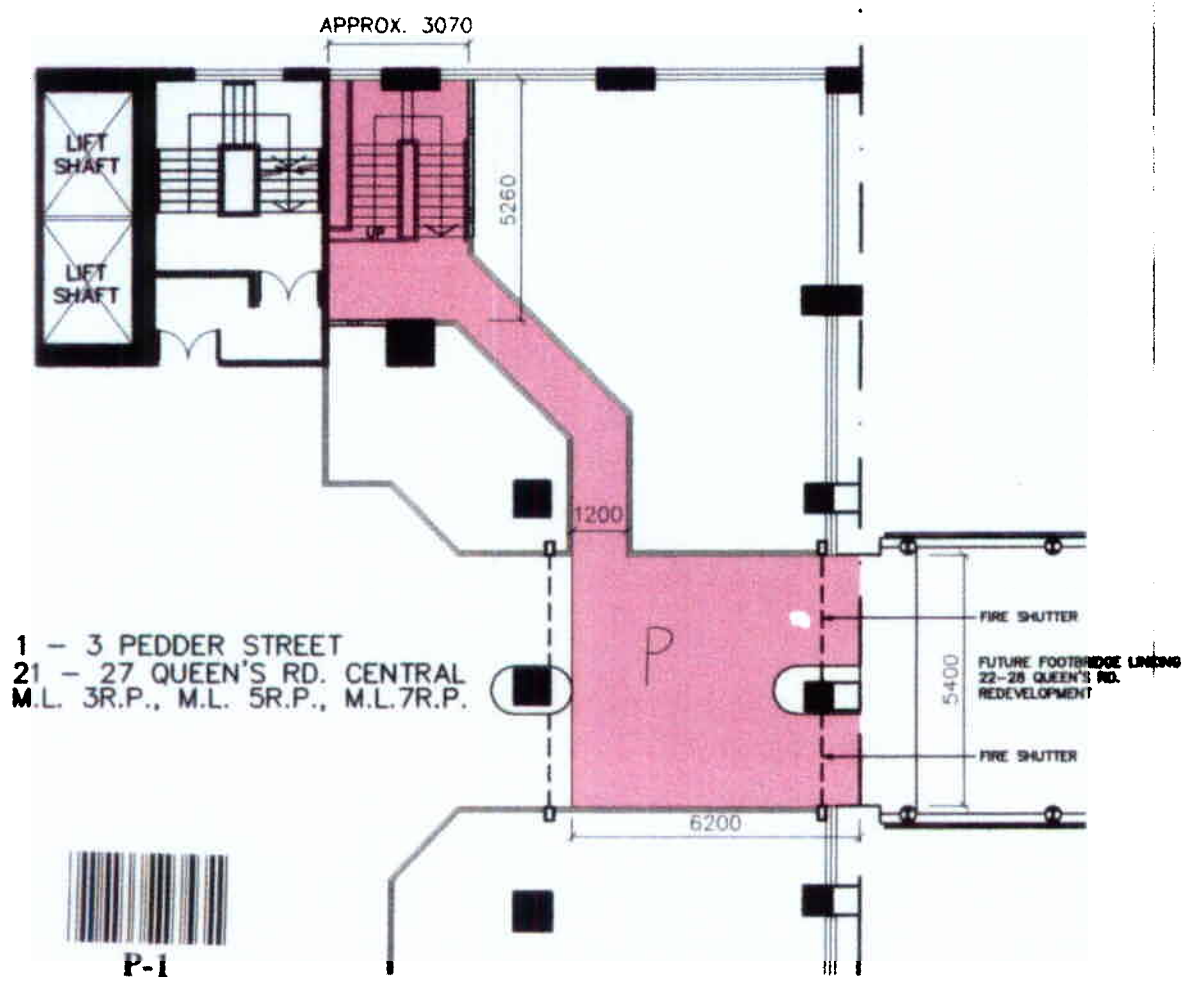
2902

Drawing No.

D - 02



UBM7785234 (3/1)



P-1

### 2/F PART PLAN

*M/N 7785234*

1-3 PEDDER STREET AND 21-27 QUEEN'S ROAD CENTRAL, H. K.  
香港畢打街 1-3 號, 皇后大道中 21-27 號

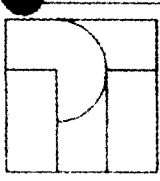
#### LEGEND :

AREA DEDICATED FOR PUBLIC PASSAGE  
(INDICATED AREA: 55.797 m<sup>2</sup>)  
UBM7785234

P

1998 SEP 19 P 340

*Richard*



**P&T Architects**  
**and Engineers Ltd**  
25/F 018 Building  
100 Queen's Road HK  
Telephone: 5788575  
Fax: 882-8-8913834

**1 - 3 PEDDER STREET**  
**21 - 27 QUEEN'S RD. CENTRAL**  
**2/F DEDICATED AREA**  
**FOR PUBLIC PASSAGE**

Scale 1:150  
Date MAY '96  
Job No. 2902

Drawing No. D - 03