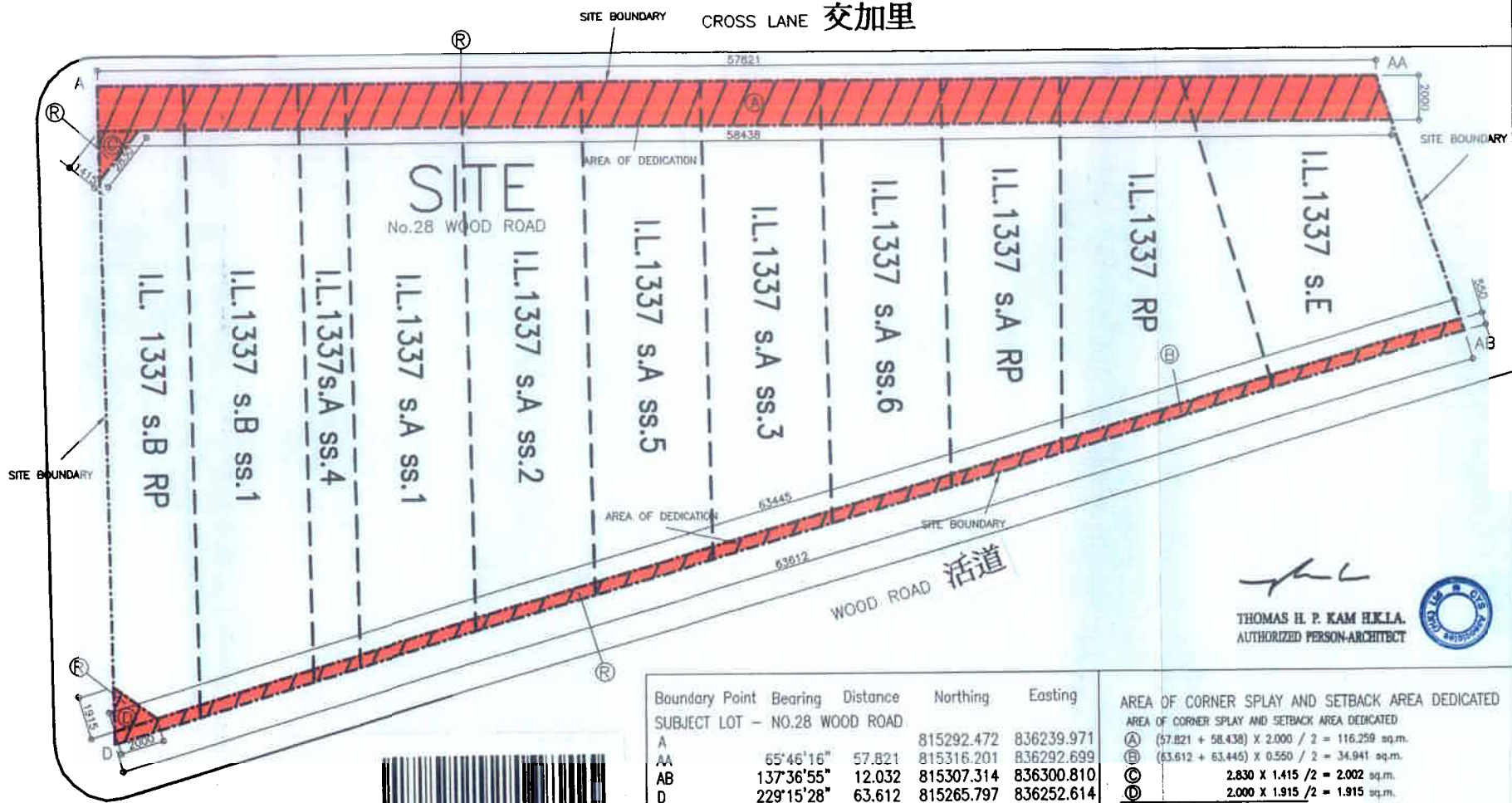




註冊摘要編號 MN: 10070801640316 A3C

# DEDICATION OF LAND AT NO. 28 WOOD ROAD, WAN CHAI, HONG KONG 活道 28 號

BURROWS STREET 巴路士街



註冊摘要編號 MN: 10082701220017 A3C

THOMAS H. P. KAM H.K.L.A.  
 AUTHORIZED PERSON-ARCHITECT

Boundary Point	Bearing	Distance	Northing	Easting
SUBJECT LOT - NO.28 WOOD ROAD				
A			815292.472	836239.971
AA	65°46'16"	57.821	815316.201	836292.699
AB	137°36'55"	12.032	815307.314	836300.810
D	229°15'28"	63.612	815265.797	836252.614
A	334°38'25"	29.519	815292.472	836239.971

AREA OF CORNER SPLAY AND SETBACK AREA DEDICATED	
Ⓐ	(57.821 + 58.438) X 2.000 / 2 = 116.259 sq.m.
Ⓑ	(63.612 + 63.445) X 0.550 / 2 = 34.941 sq.m.
Ⓒ	2.830 X 1.415 / 2 = 2.002 sq.m.
Ⓓ	2.000 X 1.915 / 2 = 1.915 sq.m.
TOTAL = 155.117 sq.m.	

**LEGEND:**

AREA OF DEDICATION (RED HATCHED BLACK)

CYS ASSOCIATES (HK) LIMITED  
 THE COMPOSITE DEVELOPMENT  
 AT NO.28 WOOD ROAD  
 LOT NO. I.L.1337 s.A ss.1, s.A ss.2, s.A ss.3, s.A ss.4,  
 s.A ss.5, s.A ss.6, s.A R.P., s.B ss.1, s.B R.P., s.E & R.P.  
 DEDICATION PLAN

PLAN NO. 9729/06

REVISION NO.	DATE
0	16-JUL-07
1	29-JAN-09
2	18-AUG-09
3	25-FEB-10
4b	15-MAR-10

DRAWN BY: P.M. WONG  
 SURVEYED BY: MICHAEL NG  
 APPROVED BY:  
  
 JOSEPH Y C WONG ALS HKIS MIRCIS RPS(LS)

SCALE 1 : 200  
 LAND MARKER (1980) H.K. CO., LTD.  
 SUITE 1501, ONE MONGKOK ROAD COMMERCIAL CENTRE, KOWLOON  
 TEL: 2663 9138 FAX: 2666 9921  
 E-MAIL ADDRESS: general@landmarker.com