

M 1286455

香港英皇道901號-907號
901-907 King's Road, HK

英皇道 KING'S ROAD (100'-0" WIDE)

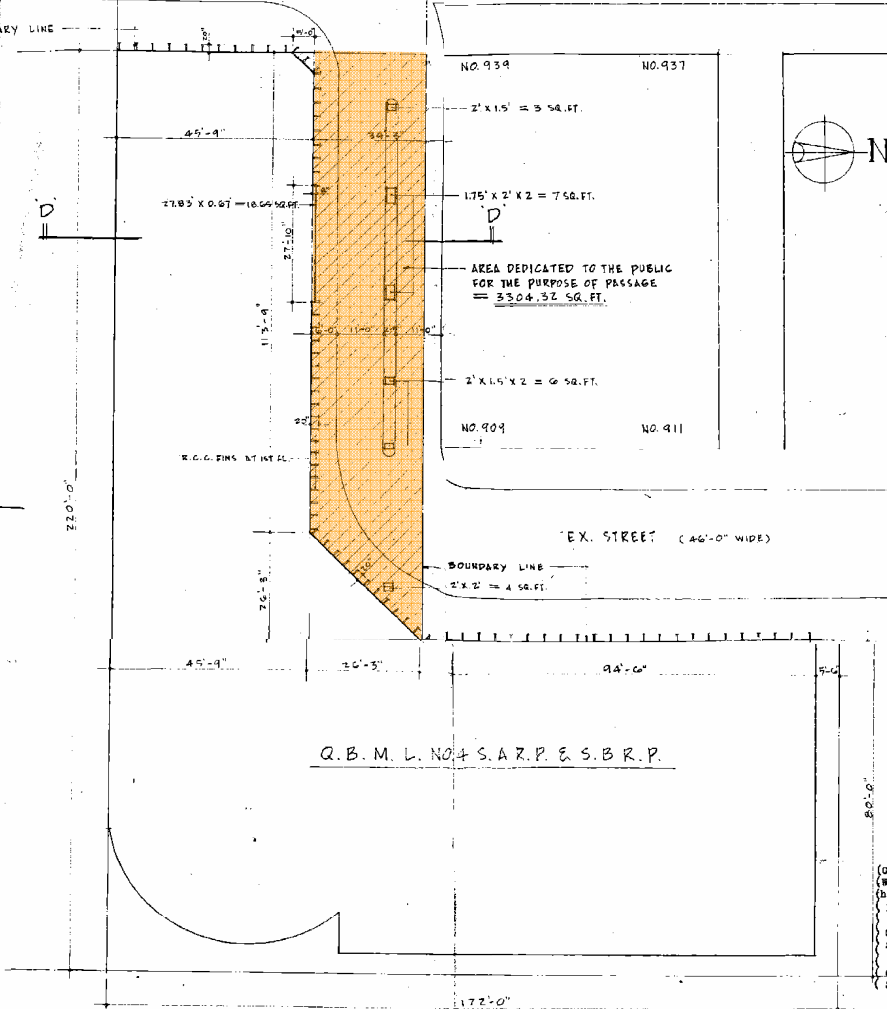
BUILDINGS ORDNANCE OFFICE
800 2/3184/75



SECTION D-D

SCALE: 3/8" = 1'-0"

AREA DEDICATED TO THE PUBLIC FOR THE PURPOSE OF PASSAGE
 $20.25' \times 113.75' + 20.25' \times 20.25' \times 1/2 + 5' \times 6' \times 1/2 - (3' + 7' + 6' + 4' + 10.65')$
 $= 2289.94 \text{ SQ. FT.} + 344.93 \text{ SQ. FT.} + 12.5 \text{ SQ. FT.} - 38.65 \text{ SQ. FT.}$
 $= 3342.97 \text{ SQ. FT.} - 38.65 \text{ SQ. FT.} = 3304.32 \text{ SQ. FT.}$



Q.B.M.L. NO. 4 S.A.R.P.E.S.B.R.P.

BLOCK PLAN

SCALE: 1/4" = 1'-0"

(C.S.)
 (Common Seal of Slater,
 Walker Limited was
 herewith affixed in the
 presence of:
 (sd.)
 GEOFFREY MICHAEL
 SIMMONS, Director
 (sd.)
 COLIN DAVID MADDINGS,
 Secretary.

(sd.)
 D. J. McEneaney
 Director of Public Works

(C.S.)
 (Common Seal of King's
 Road Development Co. Ltd.
 was herewith affixed in
 the presence of:
 (sd.)
 DAVID THOMAS, Director
 (sd.)
 P. C. CHEU, Director

M 1286455

RECEIVED BY
 MAR 8 15 42 '76
 BUILDINGS ORDNANCE OFFICE

興業建築師 HSIN-YIEH ARCHITECTS & ASSOCIATES <small>181-184 WIND ON LITE BUILDING, HONG KONG</small> AUTHORIZED ARCHITECT	PROJECT: PROPOSED COMPOSITE BUILDING ON Q.B.M.L. NO. 4 S.A.R.P.E.S.B.R.P. 901-907 & 941 KING'S ROAD	DESIGNED BY: <small>DO NOT SEAL & DRAWING FIGURED DIMENSIONS ARE TO BE FOLLOWED.</small>	NOTES: <small>DO NOT SEAL & DRAWING FIGURED DIMENSIONS ARE TO BE FOLLOWED.</small>	REVISIONS DATE:	TITLE: BLOCK PLAN	JOB NO. 730601 DRAWING P-1/1
		DRAWN BY: C. CHANG CHECKED BY: DATE: 18/12/1974				