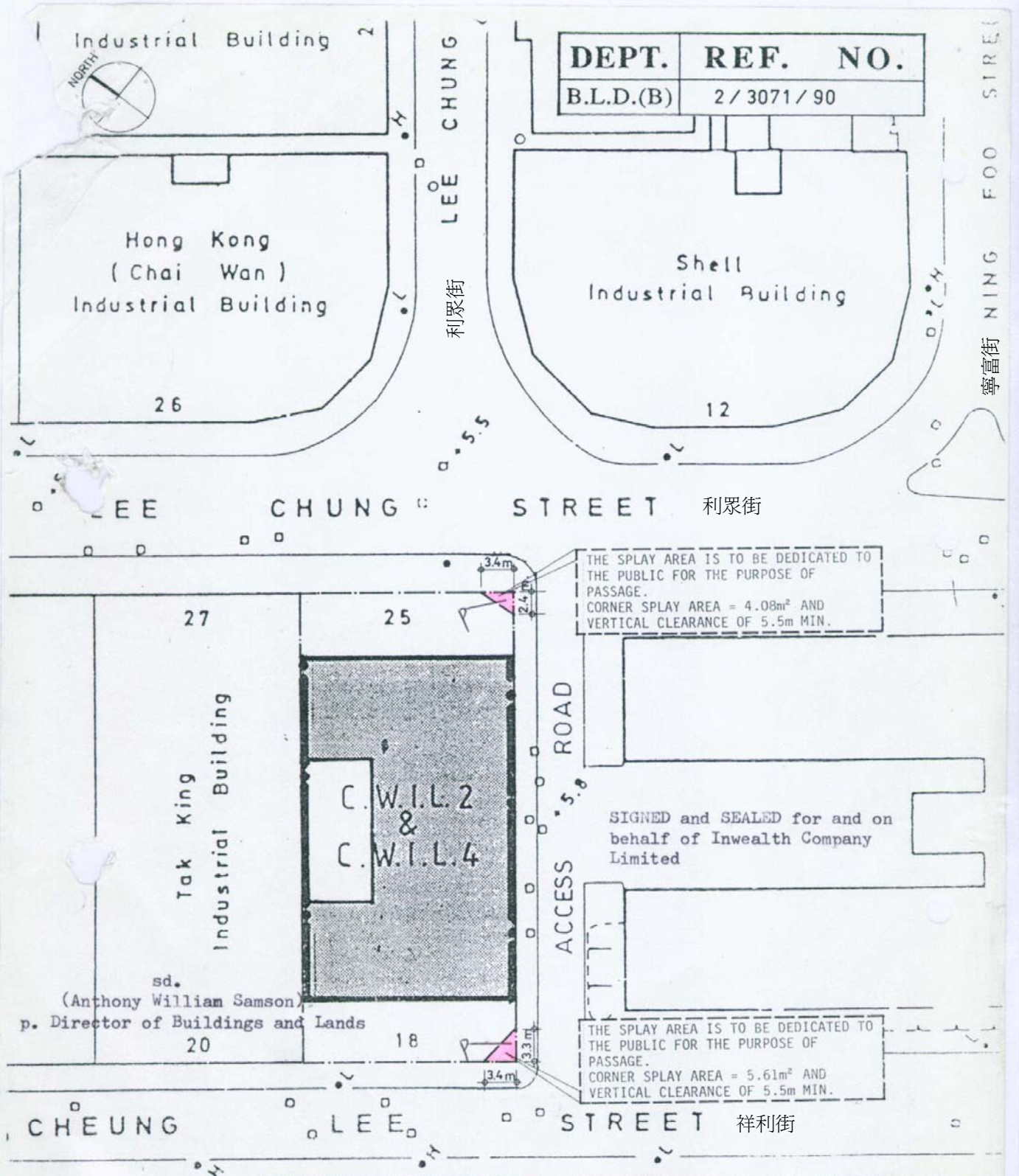


香港祥利街18號

18 Cheung Lee Street, HK



UBM5572659 (1/1)




DEPT.	REF. NO.
B.L.D.(B)	2 / 3071 / 90

THE SPLAY AREA IS TO BE DEDICATED TO THE PUBLIC FOR THE PURPOSE OF PASSAGE.
CORNER SPLAY AREA = 4.08m² AND VERTICAL CLEARANCE OF 5.5m MIN.

SIGNED and SEALED for and on behalf of Inwealth Company Limited

THE SPLAY AREA IS TO BE DEDICATED TO THE PUBLIC FOR THE PURPOSE OF PASSAGE.
CORNER SPLAY AREA = 5.61m² AND VERTICAL CLEARANCE OF 5.5m MIN.

BLOCK PLAN SHOWING SITE AREAS DEDICATED TO THE PUBLIC FOR PASSAGE PROPOSED INDUSTRIAL BUILDING ON C.W.I.L. 2 & C.W.I.L. 4, CHAIWAN, HONG KONG.		DRAWING NO. BP-1 A	JOB NO. 102/90/Y
SCALE: 1 : 500	DATE: 10 - 7 - 1992	 LIU HOK YAN & ASSOCIATES 劉學文 ARCHITECTS & ENGINEERS 師 樓	

Annexure to Memorial No. 5572659