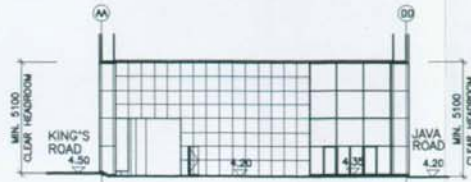
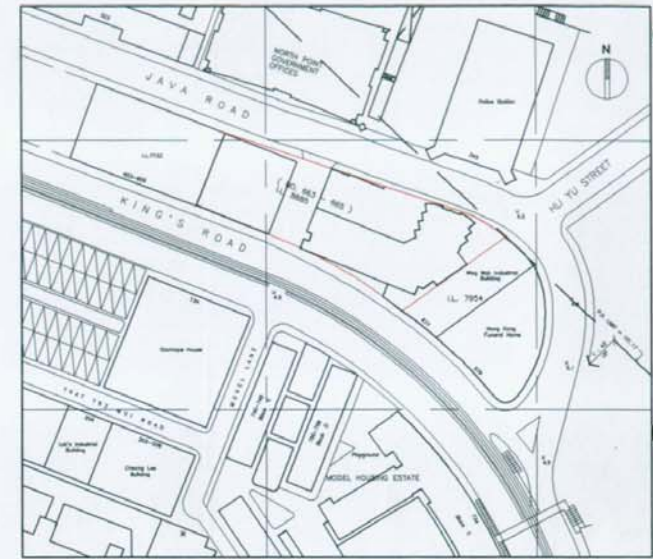
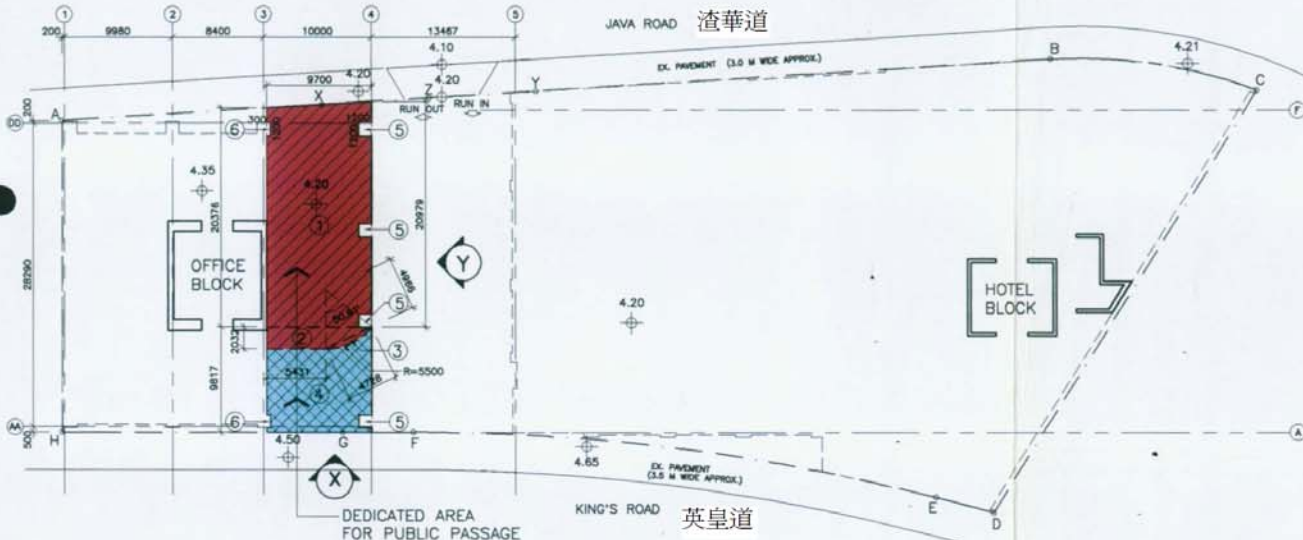




VIEW X (OFFICE)



VIEW Y (OFFICE)



SITE PLAN
1 : 2000

FIRST FLOOR (LEVEL 1)

- A DEDICATED AREA (RED HATCHED BLACK)
- B DEDICATED AREA (BLUE CROSS HATCHED BLACK)

CALCULATIONS:

$$\begin{aligned}
 ① & (20.979 + 20.376) \times 9.700 / 2 & = 200.572 \text{ M}^2 \\
 ② & (9.700 + 5.431) \times 2.032 / 2 & = 15.373 \text{ M}^2 \\
 ③ & (5.500^2 \times \pi \times 50.91' / 360' - & \\
 & (4.728 \times 4.966 / 2) & = 1.700 \text{ M}^2 \\
 ④ & (9.817 \times 9.700) - ② - ③ & \\
 & = 95.225 - 15.373 - 1.700 & = 78.152 \text{ M}^2 \\
 ⑤ & 1.200 \times 1.200 & = 1.440 \text{ M}^2 \\
 ⑥ & 1.200 \times 0.300 & = 0.360 \text{ M}^2
 \end{aligned}$$

TOTAL DEDICATED AREA (A DEDICATED AREA + B DEDICATED AREA)

$$\begin{aligned}
 ① + ② + ③ + ④ - 4⑤ - 2⑥ & \\
 = 200.572 + 15.373 + 1.700 + 78.152 & \\
 - (1.440 \times 4) - (0.360 \times 2) & \\
 = 289.317 \text{ M}^2 &
 \end{aligned}$$

AREA FOR BONUS PLOT RATIO (A DEDICATED AREA)

$$\begin{aligned}
 ① + ② + ③ - 3⑤ - ⑥ & \\
 = 200.572 + 15.373 + 1.700 & \\
 - 3 \times 1.440 - 0.360 & \\
 = 212.965 \text{ M}^2 &
 \end{aligned}$$

BONUS AREA

$$\begin{aligned}
 & = 212.965 \times 5 \\
 & = 1064.825 \text{ M}^2
 \end{aligned}$$

For and on behalf of
RANDASH INVESTMENT LIMITED

[Signature]
Authorized Signatures

[Signature]
KENNETH LUI CHI KIN
Authorized Person (List 1)

For and on behalf of
CONESTOGA LIMITED
[Signature]
Authorized Signatures

NO. DATE AMENDMENT
P&T Architects and Engineers Ltd

- HONG KONG: PETER & TURNER INTERNATIONAL INC. / P&T (HK) LTD TEL: 25282611 FAX: 852-25128284
- 25/F 278 BASSING, 180 GLOCKNER ROAD
- SHANGHAI: P&T ARCHITECTS & ENGINEERS LTD. SHANGHAI BRANCH TEL: 52202411 FAX: 52202414
- 2002-A CHANGING CONSTRUCTION, 10 FANG SHANGHAI
- SINGAPORE: P&T CONSULTANTS PTE LTD. TEL: 52202411 FAX: 52202414
- 2002 EASTING CENTRE, 10 WATSON PLACE, SINGAPORE 2104
- HOUSTON: P&T ARCHITECTS TEL: 28222844 FAX: 28222844
- 715 FOX TOWER, HOUSTON
- INDIANAPOLIS: P&T ARCHITECTS (INDIANA) LTD TEL: 462-342228 FAX: 462-342228
- 4617-111, 5175 BURNING PLAZA, INDIANAPOLIS, INDIANA
- 10000 WASHINGTON
- MELBOURNE: P&T ARCHITECTS TEL: 945-342228 FAX: 945-342228
- 4/11, 117 BURNING PLAZA, MELBOURNE, AUSTRALIA
- 2002 EASTING CENTRE, 10 WATSON PLACE, SINGAPORE 2104
- SHANGHAI: P&T ARCHITECTS LTD TEL: 522-717-1777 FAX: 522-717-4822
- 1142, 1002 AM HO ROAD, SECTION 2, TANGS 10A
- SHANGHAI

TITLE
PROPOSED HOTEL AND OFFICE DEVELOPMENT, I.L. 8885, 663-665 KING'S ROAD, NORTH POINT, HONG KONG.

DRAWING
BLOCK PLAN, PLAN & CALCULATIONS OF DEDICATED AREA FOR 1/F

SCALE 1 : 500 NUMBER 2080

DATE 10/96 D - 1

DESIGNED: _____ CHECKED: _____ APPROVED: _____

• ALL DIMENSIONS ARE IN MILLIMETER EXCEPT OTHERWISE NOTED
• DO NOT SCALE DRAWING
• ALL MEASUREMENTS SHOULD BE VERIFIED ON SITE
THE OWNERSHIP OF THE COPYRIGHT IN THIS DRAWING IS RESERVED BY P&T ARCHITECTS AND ENGINEERS LTD. NO PART THEREOF MAY BE REPRODUCED OR TRANSMITTED IN ANY FORM OR BY ANY MEANS WITHOUT THE WRITTEN PERMISSION OF P&T ARCHITECTS AND ENGINEERS LTD.

香港英皇道661-665號
661-665 King's Road, HK



UBM7882893 (1/1)

M/L 7882893