

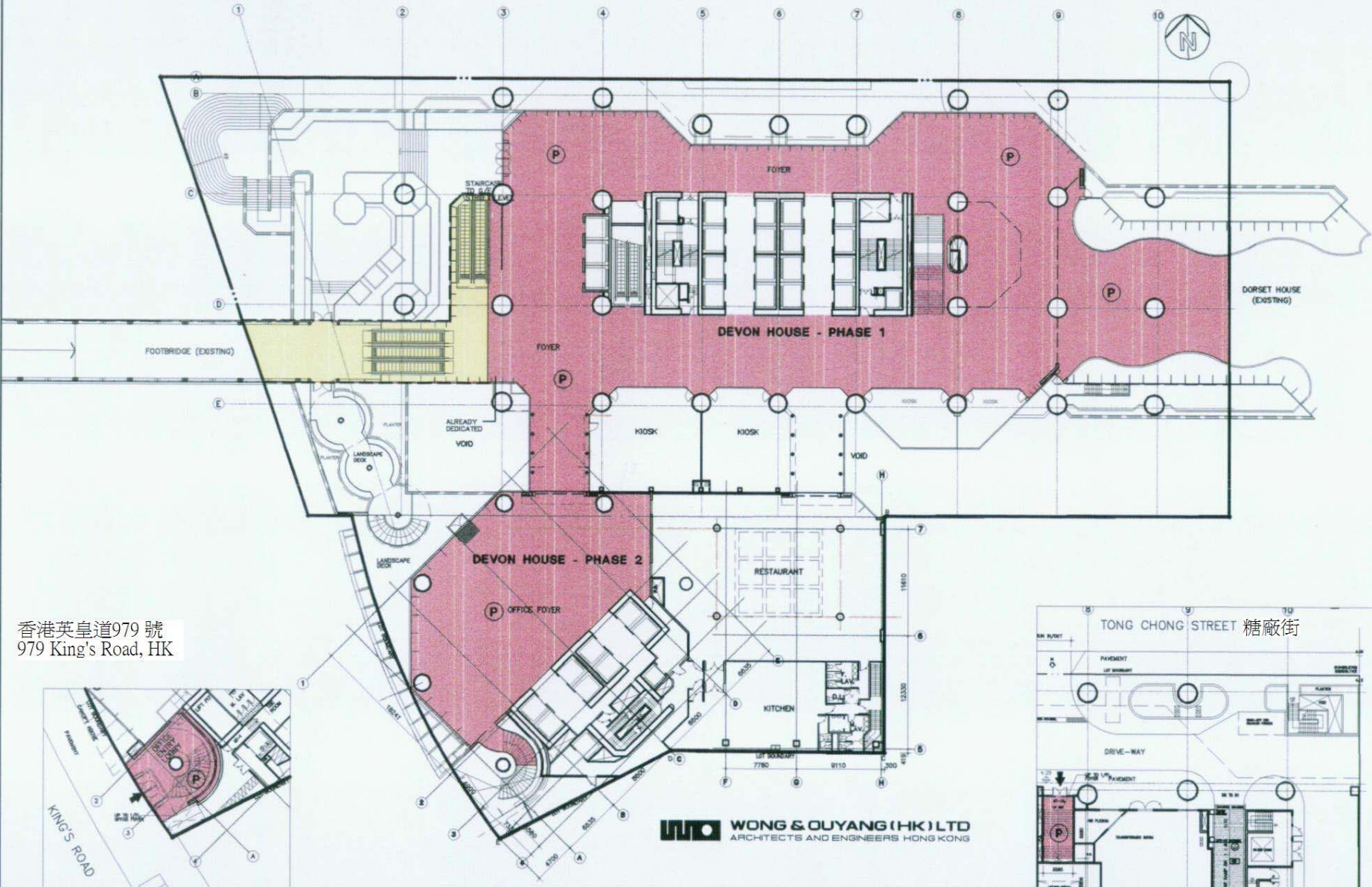


UBM8905655 (1/1)

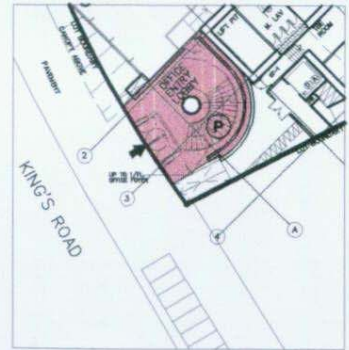
R.I.S. REF		
F.S.S. REF		
REVISION		
NUMBER	DESCRIPTION	DATE



P-1



香港英皇道979號  
979 King's Road, HK

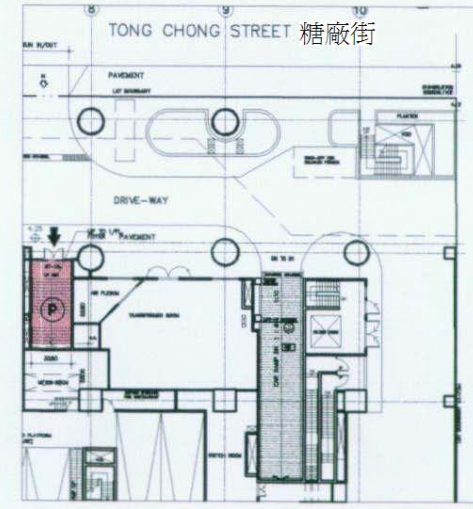


GROUND FLOOR PART PLAN OF DEVON HOUSE - PHASE 2  
(REFER DWG. NO. 211)

*m/n 8905655*

**WONG & OUYANG (HK) LTD**  
ARCHITECTS AND ENGINEERS HONG KONG

**ROBERT PH LAM**  
AUTHORIZED PERSON



GROUND FLOOR PART PLAN OF DEVON HOUSE - PHASE 1  
(REFER APPROVED G/F PLAN ON 14 DEC. 1992)

**DEDICATED AREA**

NOTE:  
TOTAL AREA OF DEDICATED AREA = 2117.496 m<sup>2</sup>  
MINIMUM HEADROOM, 2m FROM FINISHED FLOOR LEVEL FOR DEDICATION AREA

PROJECT			
DEVON HOUSE DEVELOPMENT AT LOT No. GEM 1 s.e. s.e.2, GEM 1 of s.e.1, GEM 1 of RP & M.L. 703 s.H.			
DRAWING TITLE			
DEDICATION PLAN			
SIGNATURE FOR SUBMISSION/CONSTRUCTION			
DATE			
DRAWN BY	MP	DATE	APRIL 2002
DESIGNED BY	MS	PLOT DATE	APRIL 2002
CHECKED BY	RL	DATE	APRIL 2002
SCALE	1:100	PRINT DATE	
JOB NUMBER	2044	DRAWING NUMBER	212-2
REVISION			
DO NOT SCALE OFF DRAWING. THIS DRAWING IS NOT FOR CONSTRUCTION PURPOSES UNLESS EXPRESSLY STATED. ALL RIGHTS RESERVED AND REPRODUCTION BY ANY FIRM MUST BE APPROVED BY WONG & OUYANG (HK) LTD.			