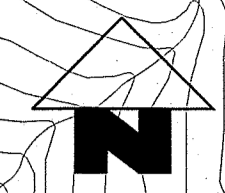


- LEGEND:**
- RAILWAY PROTECTION BOUNDARY (BOUNDARY OF AREA NUMBER 3 OF THE SCHEDULED AREAS)
  - MTR STATION ABOVE GROUND ENTRANCES
  - MTR UNDERGROUND STRUCTURES/TUNNELS
  - MTR VENTILATION SHAFTS
  - MTR ABOVE GROUND STRUCTURES/VIADUCTS
  - LINE DRAINAGE SUMP
  - ABANDONED ACCESS ADIT & SHAFT
  - STRUCTURES LESS THAN 1m BELOW GROUND
  - STRUCTURES 1m TO 3m BELOW GROUND
  - MTR COOLING WATER MAINS
  - DRAINAGE
  - WATER PIPE
  - RAILWAY FENCE
  - TRACK CENTRE LINE

MATCH LINE  
FOR CONTINUATION,  
SEE DRG. No. MTR/RP/816



大江埔  
TAI KONG PO  
N 834400

大江埔機樓  
TAI KONG PO  
PLANT BUILDING  
WIP May 2015

MATCH LINE  
FOR CONTINUATION,  
SEE DRG. No. MTR/RP/818

AREA NUMBER 3 OF THE SCHEDULED AREAS  
SCHEDULE 5  
BUILDINGS ORDINANCE (CAP. 123)

MTR CORPORATION  
RAILWAY PROTECTION PLAN  
TAI KONG PO EAP

Signed:   
Mr. WONG Wai-lun, Michael  
Secretary for Development  
Date: 29 JUL 2021

SCALE 1 : 1000 @ A2	DRAWING NO. MTR/RP/817	REV -
DATE JUL 2020	MTR CAD REFERENCE NO. MTR_RP_817.dgn	