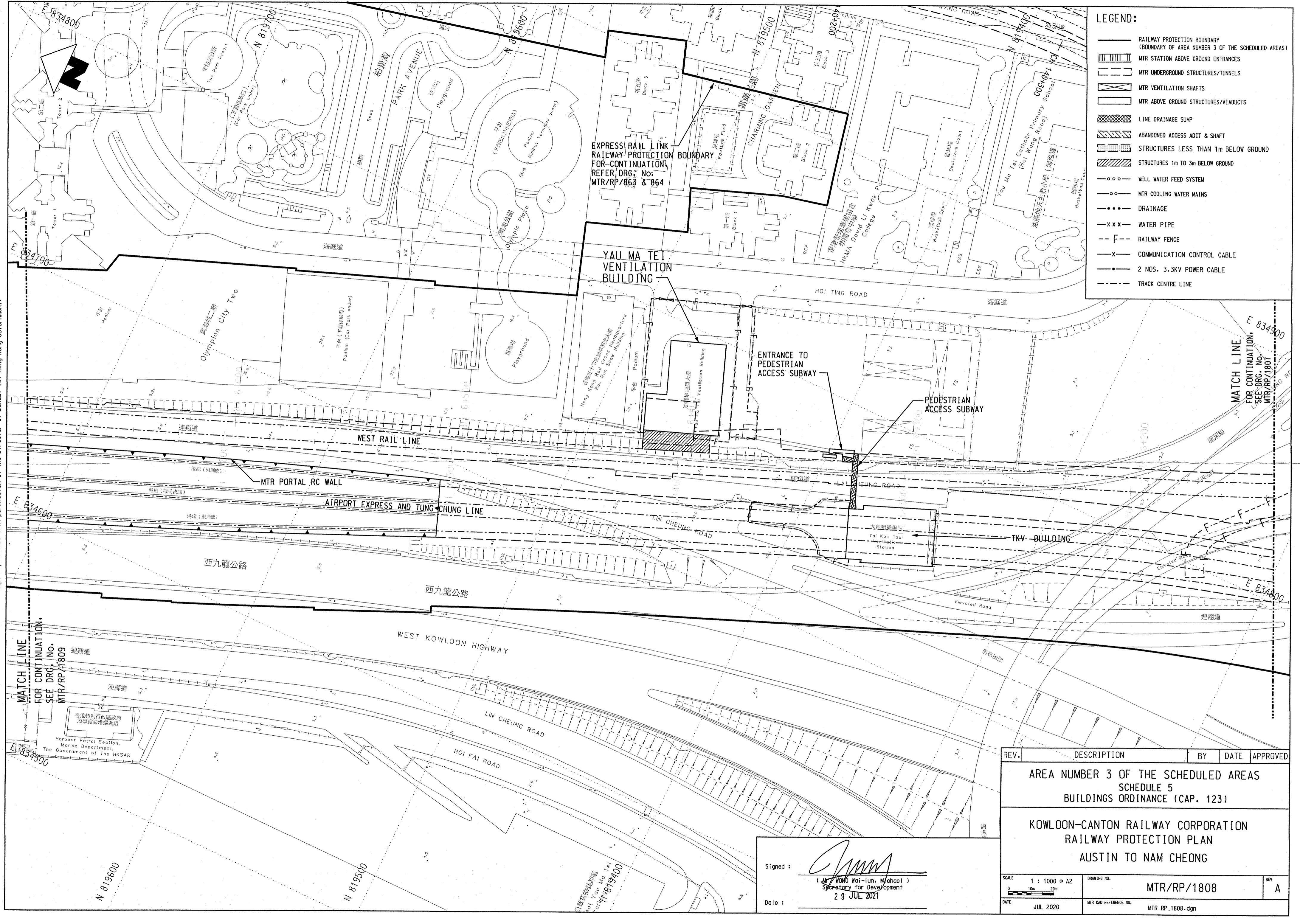


Maps reproduced with permission of The Director of Lands, (C) Hong Kong Government.



**LEGEND:**

- RAILWAY PROTECTION BOUNDARY (BOUNDARY OF AREA NUMBER 3 OF THE SCHEDULED AREAS)
- MTR STATION ABOVE GROUND ENTRANCES
- MTR UNDERGROUND STRUCTURES/TUNNELS
- MTR VENTILATION SHAFTS
- MTR ABOVE GROUND STRUCTURES/VIAUCTS
- LINE DRAINAGE SUMP
- ABANDONED ACCESS ADIT & SHAFT
- STRUCTURES LESS THAN 1m BELOW GROUND
- STRUCTURES 1m TO 3m BELOW GROUND
- WELL WATER FEED SYSTEM
- MTR COOLING WATER MAINS
- DRAINAGE
- WATER PIPE
- RAILWAY FENCE
- COMMUNICATION CONTROL CABLE
- 2 NOS. 3.3KV POWER CABLE
- TRACK CENTRE LINE

MATCH LINE  
FOR CONTINUATION,  
SEE DRG. NO.  
MTR/RP/1809

MATCH LINE  
FOR CONTINUATION,  
SEE DRG. NO.  
MTR/RP/1807

REV.	DESCRIPTION	BY	DATE	APPROVED
<b>AREA NUMBER 3 OF THE SCHEDULED AREAS SCHEDULE 5 BUILDINGS ORDINANCE (CAP. 123)</b>				
<b>KOWLOON-CANTON RAILWAY CORPORATION RAILWAY PROTECTION PLAN AUSTIN TO NAM CHEONG</b>				
SCALE	1 : 1000 @ A2	DRAWING NO.	MTR/RP/1808	
DATE	JUL 2020	MTR CAD REFERENCE NO.	MTR_RP_1808.dgn	
			REV	A

Signed:   
( Mr. WONG Wai-lun, Michael )  
Secretary for Development  
Date: 29 JUL 2021

公眾諮詢處  
Yau Ma Tei  
MTR/RP/1808