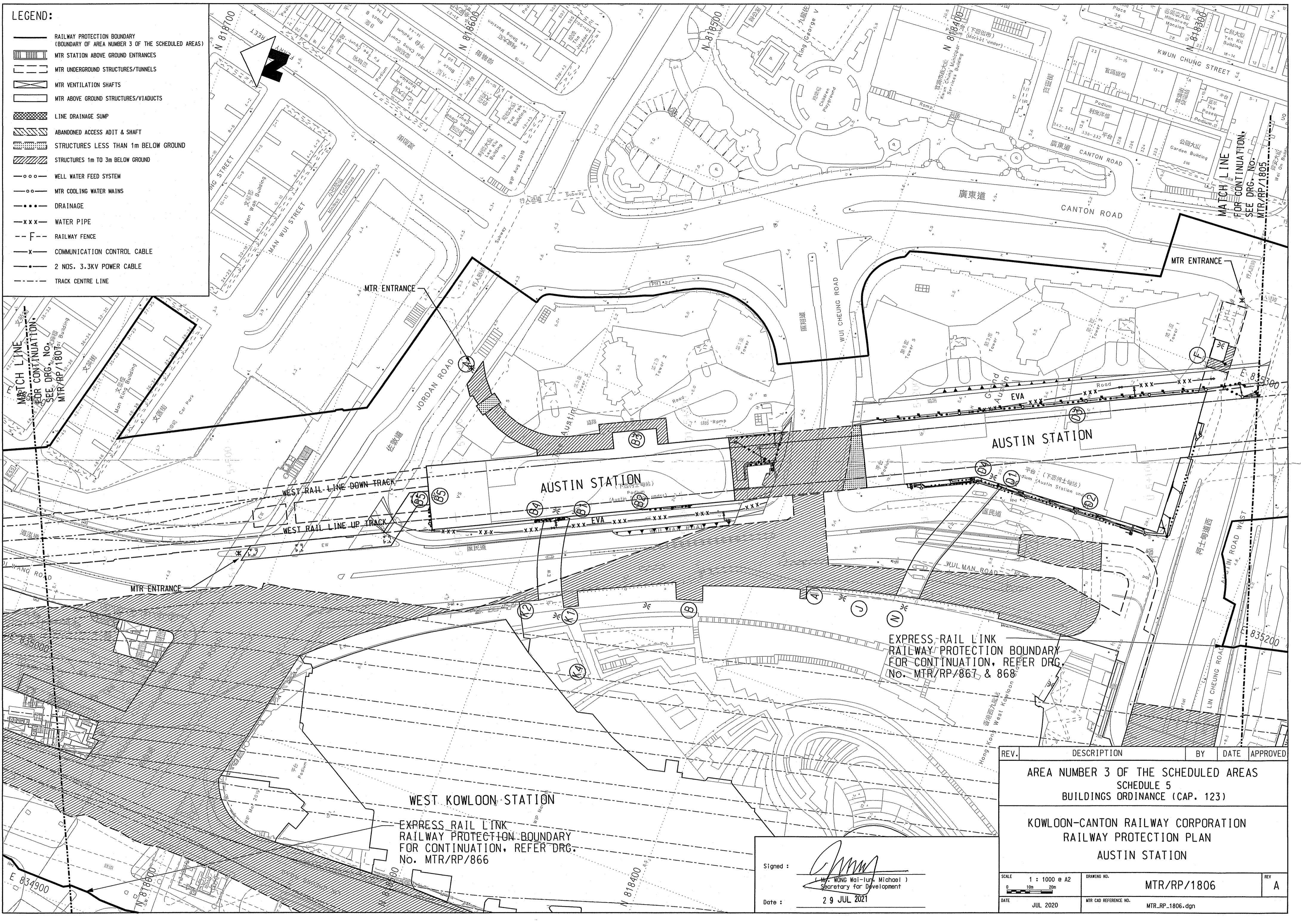


Maps reproduced with permission of The Director of Lands, (C) Hong Kong Government.

LEGEND:

- RAILWAY PROTECTION BOUNDARY (BOUNDARY OF AREA NUMBER 3 OF THE SCHEDULED AREAS)
- MTR STATION ABOVE GROUND ENTRANCES
- MTR UNDERGROUND STRUCTURES/TUNNELS
- MTR VENTILATION SHAFTS
- MTR ABOVE GROUND STRUCTURES/VIADUCTS
- LINE DRAINAGE SUMP
- ABANDONED ACCESS ADIT & SHAFT
- STRUCTURES LESS THAN 1m BELOW GROUND
- STRUCTURES 1m TO 3m BELOW GROUND
- WELL WATER FEED SYSTEM
- MTR COOLING WATER MAINS
- DRAINAGE
- WATER PIPE
- RAILWAY FENCE
- COMMUNICATION CONTROL CABLE
- 2 NOS. 3.3KV POWER CABLE
- TRACK CENTRE LINE



EXPRESS RAIL LINK
RAILWAY PROTECTION BOUNDARY
FOR CONTINUATION, REFER DRG.
No. MTR/RP/867 & 868

WEST KOWLOON STATION
EXPRESS RAIL LINK
RAILWAY PROTECTION BOUNDARY
FOR CONTINUATION, REFER DRG.
No. MTR/RP/866

Signed:
Mr. WONG Wai-lun (Mr. Michael)
Secretary for Development
Date: 29 JUL 2021

REV.	DESCRIPTION	BY	DATE	APPROVED
AREA NUMBER 3 OF THE SCHEDULED AREAS SCHEDULE 5 BUILDINGS ORDINANCE (CAP. 123)				
KOWLOON-CANTON RAILWAY CORPORATION RAILWAY PROTECTION PLAN AUSTIN STATION				
SCALE	1 : 1000 @ A2	DRAWING NO.	MTR/RP/1806	REV
DATE	JUL 2020	MTR CAD REFERENCE NO.	MTR_RP_1806.dgn	A