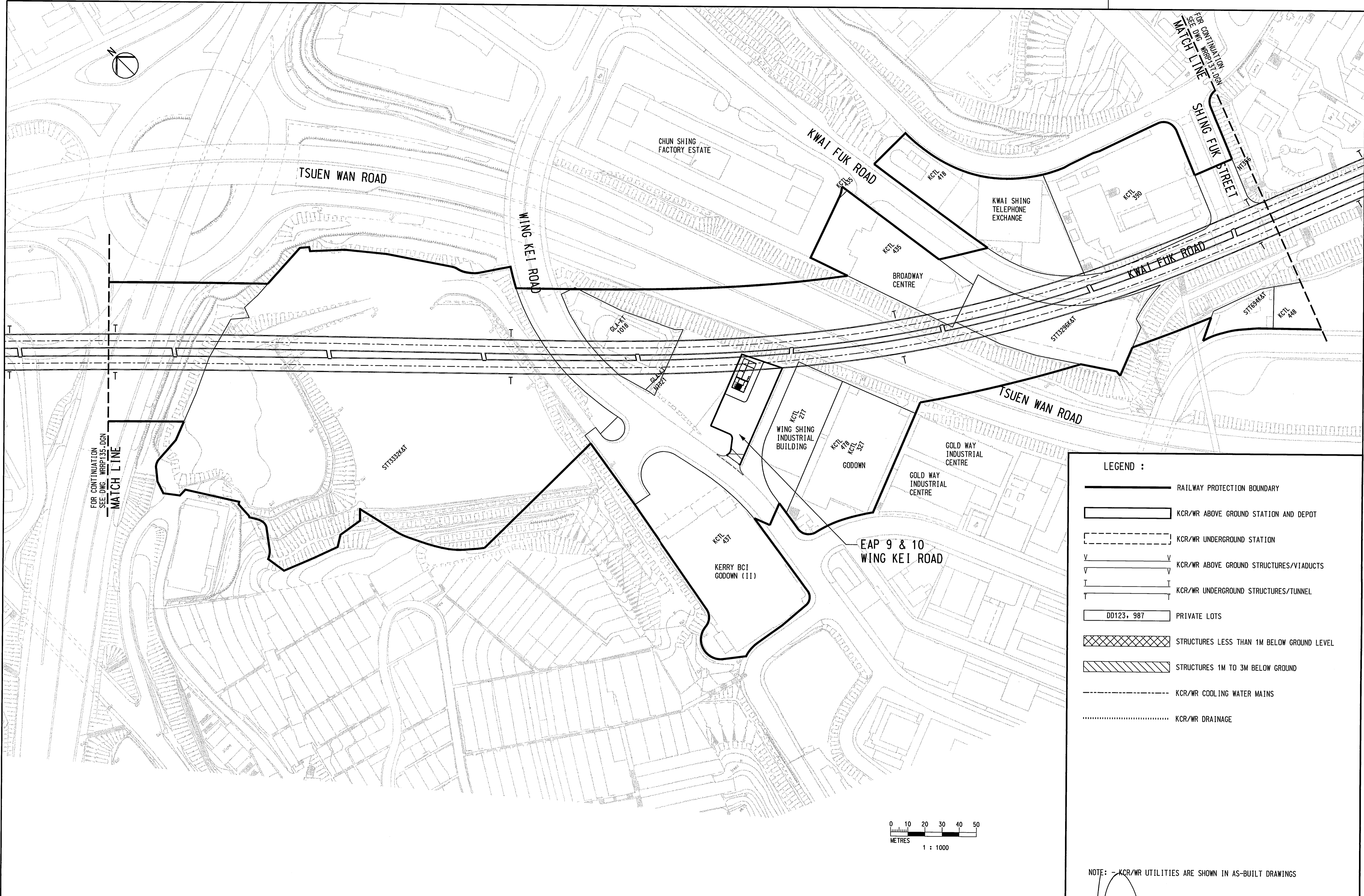


User:WorkSpace c:\cad\_apps\mstru\workspace\user\example\uf User:Ref c:\cad\_apps\mstru\workspace\projects\p User:Ref c:\cad\_apps\mstru\workspace\projects\p  
 PRINTED BY: A45098 02/06/03 04:41:36 PM  
 FILENAME: k:\cadd\w\_r\_dwg\prr\wide\Railway Protection\Government\WRP136.dgn  
 Maps reproduced with permission of The Director of Lands, (C) Hong Kong Government.

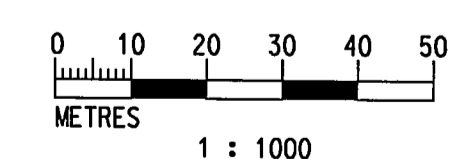


FOR CONTINUATION  
SEE DWG. WRP136.dgn  
MATCH LINE

FOR CONTINUATION  
SEE DWG. WRP137.dgn  
MATCH LINE

**LEGEND :**

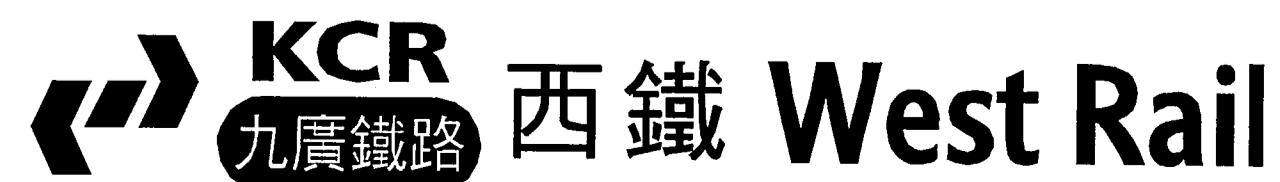
- RAILWAY PROTECTION BOUNDARY
- KCR/WR ABOVE GROUND STATION AND DEPOT
- KCR/WR UNDERGROUND STATION
- KCR/WR ABOVE GROUND STRUCTURES/VIADUCTS
- KCR/WR UNDERGROUND STRUCTURES/TUNNEL
- PRIVATE LOTS
- STRUCTURES LESS THAN 1M BELOW GROUND LEVEL
- STRUCTURES 1M TO 3M BELOW GROUND
- KCR/WR COOLING WATER MAINS
- KCR/WR DRAINAGE



NOTE: - KCR/WR UTILITIES ARE SHOWN IN AS-BUILT DRAWINGS

REV	DATE	BY	SUB	APP	DESCRIPTION
02	JUN2003	SN	ADM	LSC	SECOND ISSUE
08	NOV2002	SN	ADM	LSC	FIRST ISSUE

DESIGNED BY  
SN  
 DRAWN BY  
M K CHUNG  
 CHECKED BY  
ADM  
 IN CHARGE  
LSC  
 DATE



AREA NUMBER 3 OF THE SCHEDULED AREAS  
 FIFTH SCHEDULE  
 BUILDINGS ORDINANCE (CAP.123)  
 RAILWAY LINES OF THE  
 KOWLOON - CANTON RAILWAY CORPORATION  
 - WEST RAIL (PHASE I)  
 RAILWAY PROTECTION PLAN

Signed:   
 (Michael M F Y SUEN)  
 Secretary for Housing, Planning and Lands  
 Date: 6 JUN 2003



CADD FILE NO WRP136.DGN	CADD DATE 29JUL2002
SCALE 1:1000 @ A1	
DRAWING NUMBER KCR/WR/RP/136	
SHEET NO 36	STAGE CODE/REV 1