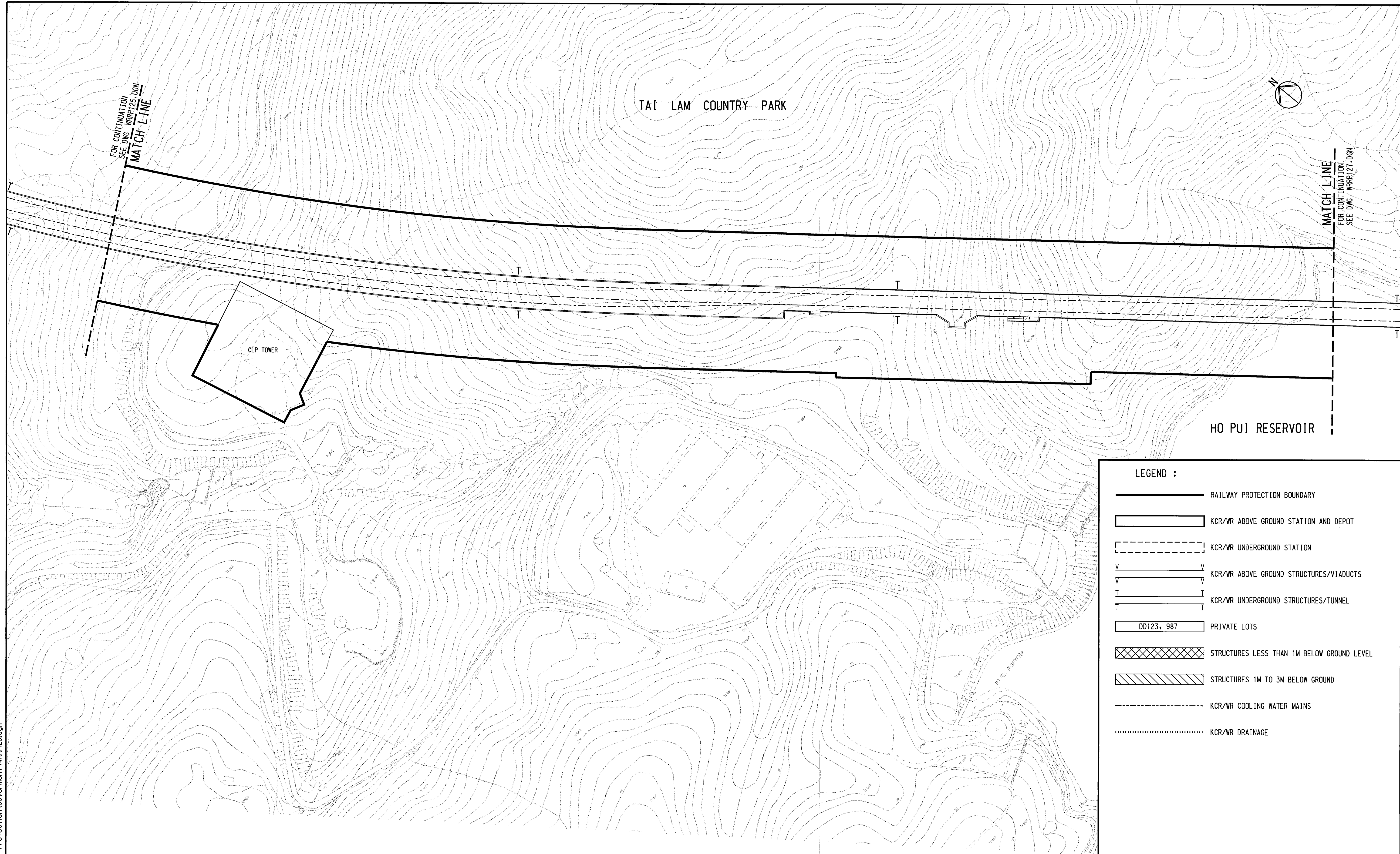
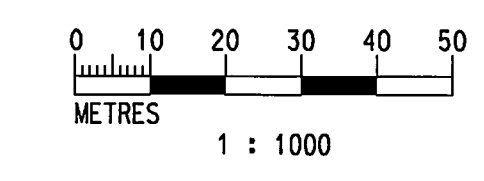


User:space c:\cadd\_apps\mstru\workspace\users\example\userRef at cadd\_apps\mstru\workspace\projects\pof  
 PRINTED BY: A60188 02/06/03 04:16:28 PM  
 FILENAME: I:\Cadd\WLR\_DWG\PRJ\_WIDE\Railway Protection\Government\WRRP126.dgn



**LEGEND :**

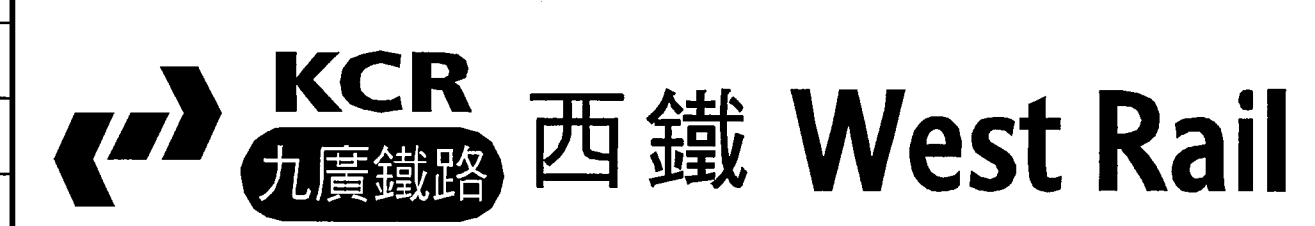
- RAILWAY PROTECTION BOUNDARY
- KCR/WR ABOVE GROUND STATION AND DEPOT
- KCR/WR UNDERGROUND STATION
- KCR/WR ABOVE GROUND STRUCTURES/VIADUCTS
- KCR/WR UNDERGROUND STRUCTURES/TUNNEL
- DD123, 987 PRIVATE LOTS
- STRUCTURES LESS THAN 1M BELOW GROUND LEVEL
- STRUCTURES 1M TO 3M BELOW GROUND
- KCR/WR COOLING WATER MAINS
- KCR/WR DRAINAGE



NOTE: - KCR/WR UTILITIES ARE SHOWN IN AS-BUILT DRAWINGS

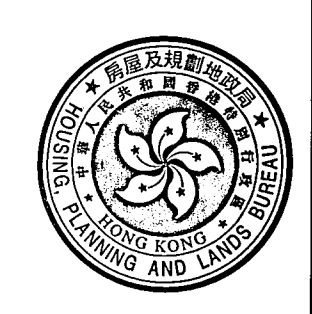
REV	DATE	BY	SUB	APP	DESCRIPTION
△	02JUN2003	SN	ADM	LSC	SECOND ISSUE
△	08NOV2002	SN	ADM	LSC	FIRST ISSUE

DESIGNED BY  
SN  
 DRAWN BY  
M. K. CHUNG  
 CHECKED BY  
ADM  
 IN CHARGE  
LSC  
 DATE



AREA NUMBER 3 OF THE SCHEDULED AREAS  
 FIFTH SCHEDULE  
 BUILDINGS ORDINANCE (CAP. 123)  
 RAILWAY LINES OF THE  
 KOWLOON - CANTON RAILWAY CORPORATION  
 - WEST RAIL (PHASE 1)  
 RAILWAY PROTECTION PLAN

Signed:   
 (Michael M Y SUEN)  
 Secretary for Housing, Planning and Lands  
 Date: 6 JUN 2003



CADD FILE NO WRRP126.DGN	CADD DATE 29JUL2002
SCALE 1:1000 @ A1	
DRAWING NUMBER KCR/WR/RP/126	
SHEET NO 26	STAGE CODE/REV 1