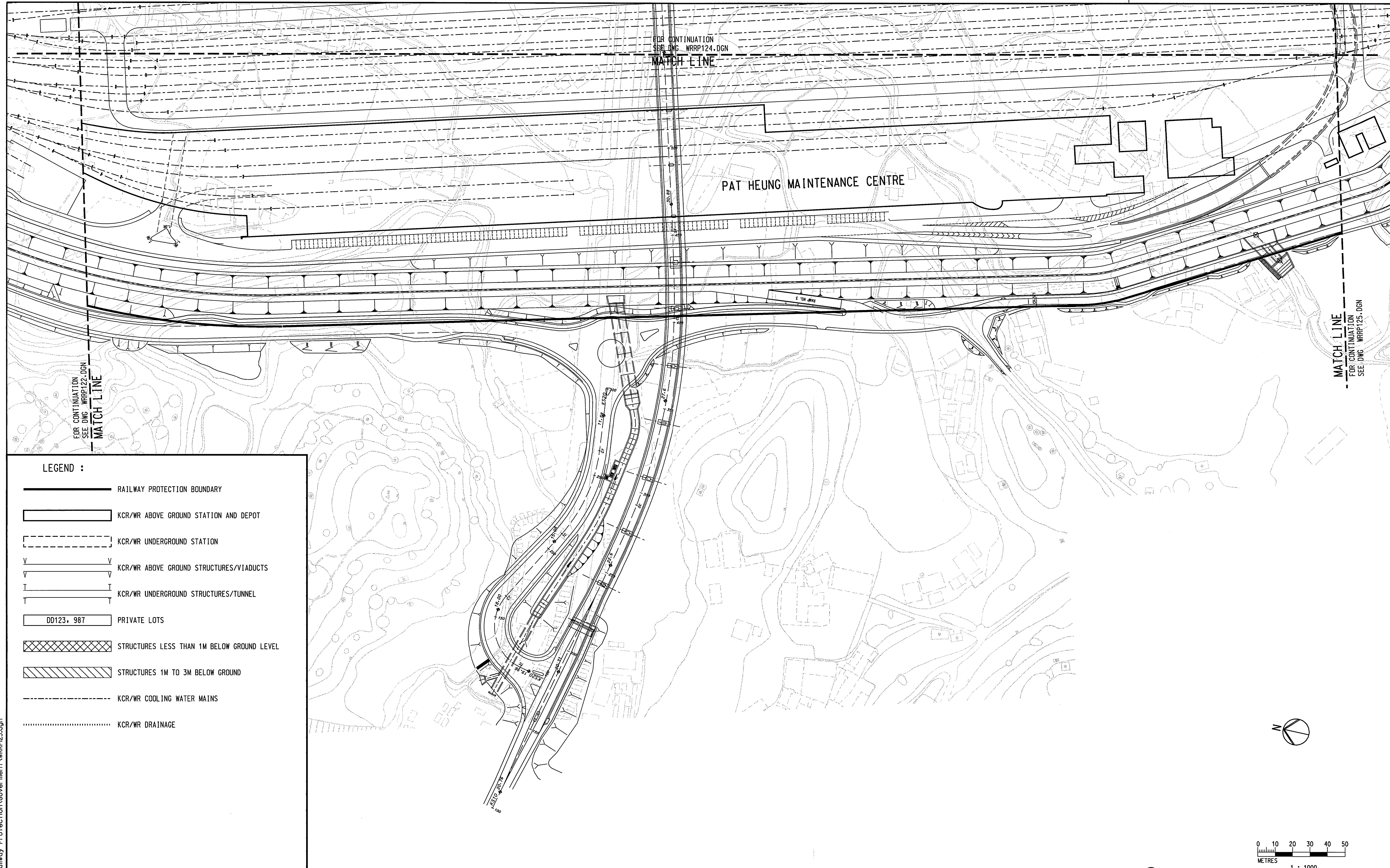


User:Workspace c:\cadd_apps\mstnu\Workspace\Users\example\lucf, UserRef: c:\cadd_apps\mstnu\Workspace\Projects\pcef
 PRINTED BY: A450188 02/06/03 04:04:43 PM
 FILENAME: h:\cadd\w_r_dwg\PRJ_WIDE\Railway Protection\Government\WRRP123.dgn



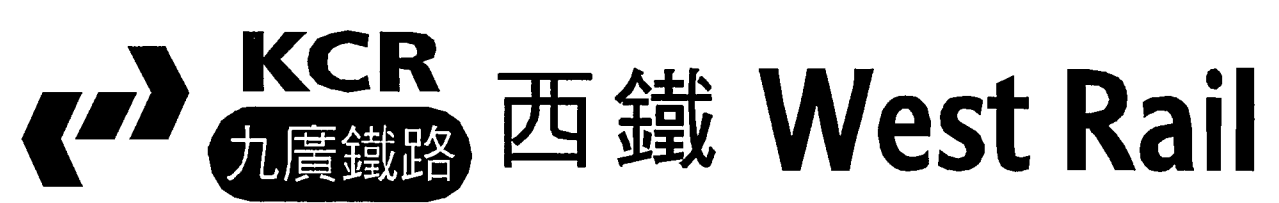
LEGEND :

- RAILWAY PROTECTION BOUNDARY
- KCR/WR ABOVE GROUND STATION AND DEPOT
- KCR/WR UNDERGROUND STATION
- KCR/WR ABOVE GROUND STRUCTURES/VIAUCTS
- KCR/WR UNDERGROUND STRUCTURES/TUNNEL
- PRIVATE LOTS
- STRUCTURES LESS THAN 1M BELOW GROUND LEVEL
- STRUCTURES 1M TO 3M BELOW GROUND
- KCR/WR COOLING WATER MAINS
- KCR/WR DRAINAGE

NOTE: - KCR/WR UTILITIES ARE SHOWN IN AS-BUILT DRAWINGS

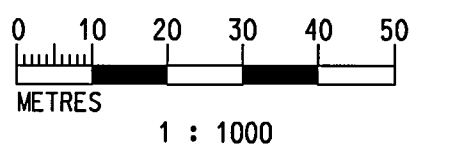
REV	DATE	BY	SUB	APP	DESCRIPTION
02	JUN2003	SN	ADM	LSC	SECOND ISSUE
08	NOV2002	SN	ADM	LSC	FIRST ISSUE

DESIGNED BY	SN
DRAWN BY	M. K. CHUNG
CHECKED BY	ADM
IN CHARGE	LSC
DATE	



AREA NUMBER 3 OF THE SCHEDULED AREAS
 FIFTH SCHEDULE
 BUILDINGS ORDINANCE (CAP.123)
 RAILWAY LINES OF THE
 KOWLOON - CANTON RAILWAY CORPORATION
 - WEST RAIL (PHASE I)
 RAILWAY PROTECTION PLAN

Signed:
 (Michael M Y SUEN)
 Secretary for Housing, Planning and Lands
 Date: 6 JUN 2003



CADD FILE NO	WRRP123.DGN	CADD DATE	29 JUL 2002
SCALE	1:1000 @ A1		
DRAWING NUMBER	KCR/WR/RP/123		
SHEET NO	23	STAGE CODE	REV 1