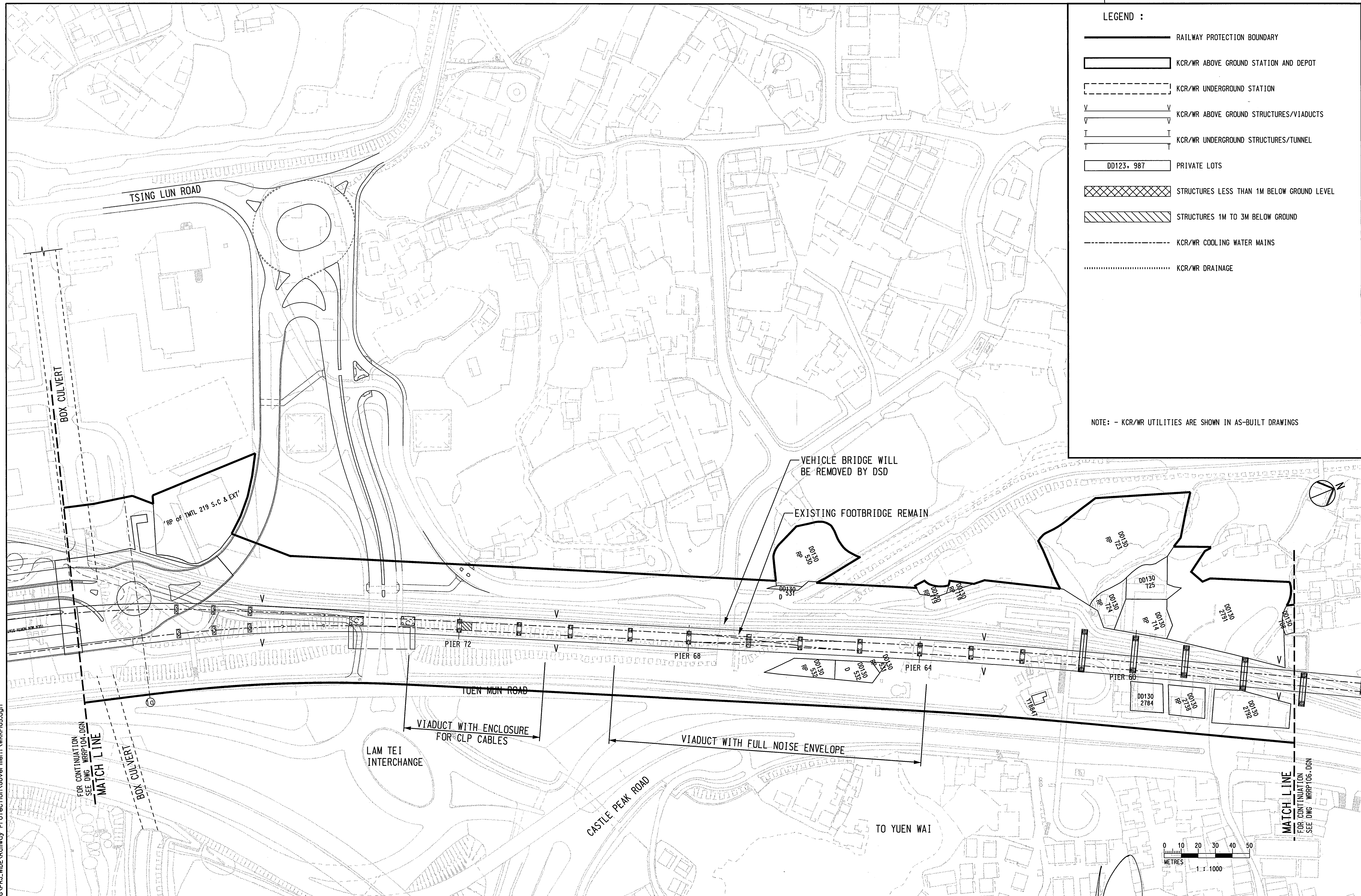


UserWorkspace c:\cadd\apps\mstru\Workspace\Users\example\user\UserRef c:\cadd\apps\mstru\Workspace\projects\p05.pcf
 PRINTED BY: A45098 02/06/03 10:51:11 AM
 FILENAME: H:\cadd\w_r.dwg\PRJ_WIDE\Railway Protection\Government\WRRP105.dgn



LEGEND :

- RAILWAY PROTECTION BOUNDARY
- ▭ KCR/WR ABOVE GROUND STATION AND DEPOT
- - - - KCR/WR UNDERGROUND STATION
- V V KCR/WR ABOVE GROUND STRUCTURES/VIADUCTS
- T T KCR/WR UNDERGROUND STRUCTURES/TUNNEL
- DD123, 987 PRIVATE LOTS
- ▨ STRUCTURES LESS THAN 1M BELOW GROUND LEVEL
- ▧ STRUCTURES 1M TO 3M BELOW GROUND
- - - - KCR/WR COOLING WATER MAINS
- KCR/WR DRAINAGE

NOTE: - KCR/WR UTILITIES ARE SHOWN IN AS-BUILT DRAWINGS

REV	DATE	BY	SUB	APP	DESCRIPTION
02JUN2003	SN	ADM	LSC		SECOND ISSUE
08NOV2002	SN	ADM	LSC		FIRST ISSUE

DESIGNED BY
SN
 DRAWN BY
M. K. CHUNG
 CHECKED BY
ADM
 IN CHARGE
LSC
 DATE



AREA NUMBER 3 OF THE SCHEDULED AREAS
 FIFTH SCHEDULE
 BUILDINGS ORDINANCE (CAP.123)
 RAILWAY LINES OF THE
 KOWLOON - CANTON RAILWAY CORPORATION
 - WEST RAIL (PHASE I)
 RAILWAY PROTECTION PLAN

Signed:
 (Michael M Y SUEN)
 Secretary for Housing, Planning and Lands
 Date: 6 JUN 2003



CADD FILE NO WRRP105.DGN	CADD DATE 29JUL2002
SCALE 1:1000 @ A1	
DRAWING NUMBER KCR/WR/RP/105	
SHEET NO 5	STAGE CODE REV 1