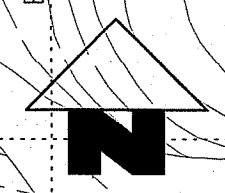


MATCH LINE
FOR CONTINUATION.
SEE DRG. No. MTR/RP/828

- LEGEND:**
- RAILWAY PROTECTION BOUNDARY (BOUNDARY OF AREA NUMBER 3 OF THE SCHEDULED AREAS)
 - MTR STATION ABOVE GROUND ENTRANCES
 - MTR UNDERGROUND STRUCTURES/TUNNELS
 - MTR VENTILATION SHAFTS
 - MTR ABOVE GROUND STRUCTURES/VIADUCTS
 - LINE DRAINAGE SUMP
 - ABANDONED ACCESS ADIT & SHAFT
 - STRUCTURES LESS THAN 1m BELOW GROUND
 - STRUCTURES 1m TO 3m BELOW GROUND
 - MTR COOLING WATER MAINS
 - DRAINAGE
 - WATER PIPE
 - RAILWAY FENCE
 - TRACK CENTRE LINE



N 831100

N 831000

N 830900

N 830800

MATCH LINE
FOR CONTINUATION.
SEE DRG. No. MTR/RP/830

Signed :
(Wong Wai-lun, Michael)
Secretary for Development
Date : 29 JUL 2021

| | | |
|--|---|----------|
| AREA NUMBER 3 OF THE SCHEDULED AREAS SCHEDULE 5 BUILDINGS ORDINANCE (CAP. 123) | | |
| MTR CORPORATION RAILWAY PROTECTION PLAN TSE UK TSUEN TO SHEK YAM TUNNELS | | |
| SCALE 1 : 1000 @ A2 | DRAWING NO. MTR/RP/829 | REV - |
| DATE JUL 2020 | MTR CAD REFERENCE NO. MTR_RP_829.dgn | |