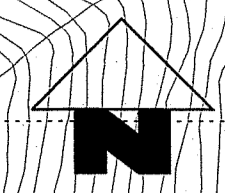


MATCH LINE
FOR CONTINUATION,
SEE DRG. No. MTR/RP/814

MATCH LINE
FOR CONTINUATION,
SEE DRG. No. MTR/RP/816

- LEGEND:**
- RAILWAY PROTECTION BOUNDARY (BOUNDARY OF AREA NUMBER 3 OF THE SCHEDULED AREAS)
 - MTR STATION ABOVE GROUND ENTRANCES
 - MTR UNDERGROUND STRUCTURES/TUNNELS
 - MTR VENTILATION SHAFTS
 - MTR ABOVE GROUND STRUCTURES/VIADUCTS
 - LINE DRAINAGE SUMP
 - ABANDONED ACCESS ADIT & SHAFT
 - STRUCTURES LESS THAN 1m BELOW GROUND
 - STRUCTURES 1m TO 3m BELOW GROUND
 - MTR COOLING WATER MAINS
 - DRAINAGE
 - WATER PIPE
 - RAILWAY FENCE
 - TRACK CENTRE LINE



AREA NUMBER 3 OF THE SCHEDULED AREAS
SCHEDULE 5
BUILDINGS ORDINANCE (CAP. 123)

MTR CORPORATION
RAILWAY PROTECTION PLAN
NGAU TAM MEI TO TAI KONG PO

Signed:
MR. WONG Wai-lun, Michael
Secretary for Development
Date: 29 JUL 2021

SCALE 1 : 1000 @ A2	DRAWING NO. MTR/RP/815	REV -
DATE JUL 2020	MTRC CAD REFERENCE NO. MTR_RP_815.dgn	