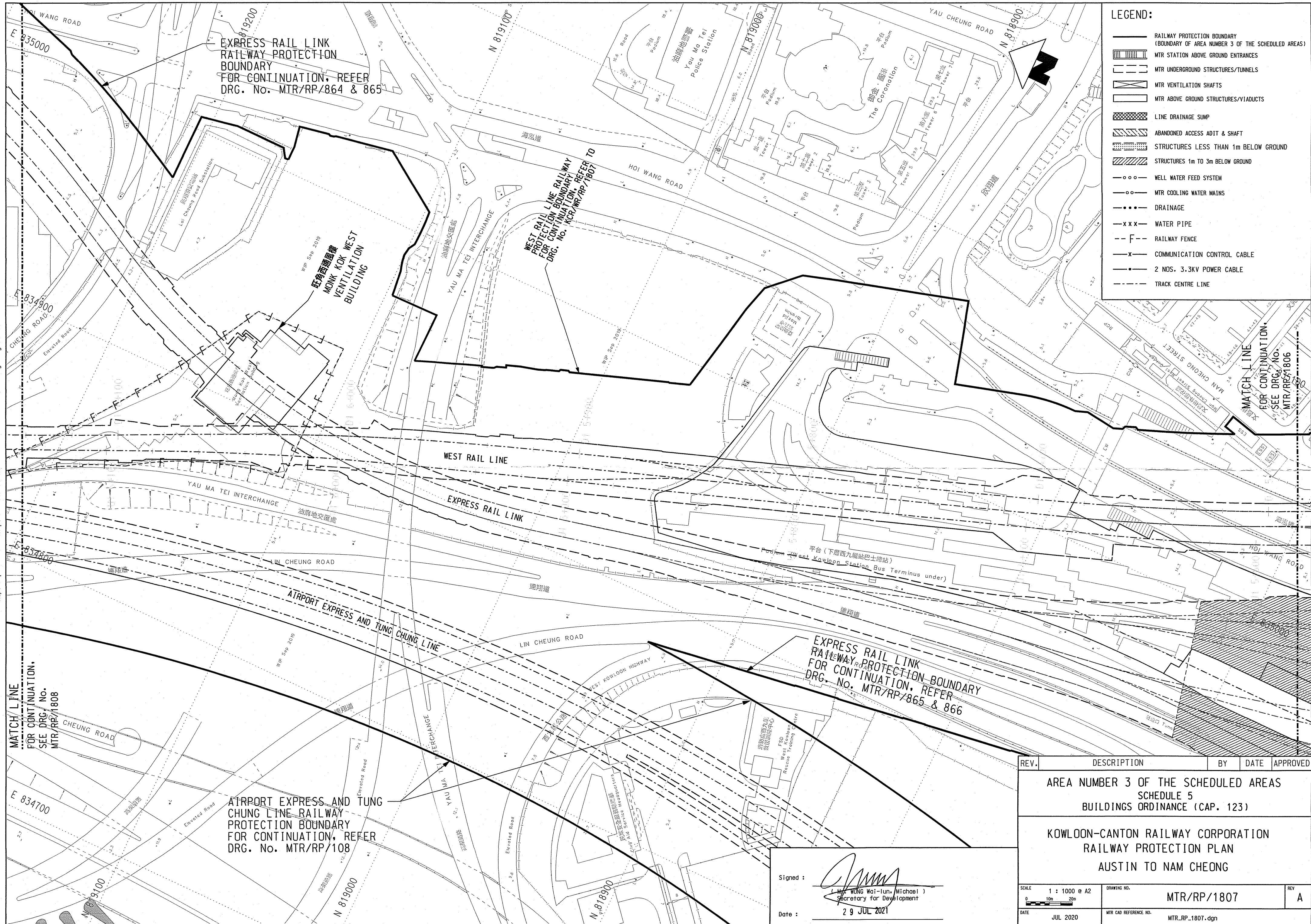


Maps reproduced with permission of the Director of Lands, (C) Hong Kong Government.



EXPRESS RAIL LINK RAILWAY PROTECTION BOUNDARY FOR CONTINUATION, REFER DRG. No. MTR/RP/864 & 865

WEST RAIL LINE RAILWAY PROTECTION BOUNDARY FOR CONTINUATION, REFER TO DRG. No. KCR/WR/RP/1807

EXPRESS RAIL LINK RAILWAY PROTECTION BOUNDARY FOR CONTINUATION, REFER DRG. No. MTR/RP/865 & 866

AIRPORT EXPRESS AND TUNG CHUNG LINE RAILWAY PROTECTION BOUNDARY FOR CONTINUATION, REFER DRG. No. MTR/RP/108

MATCH LINE FOR CONTINUATION, SEE DRG. No. MTR/RP/1808

MATCH LINE FOR CONTINUATION, SEE DRG. No. MTR/RP/1806

LEGEND:

- RAILWAY PROTECTION BOUNDARY (BOUNDARY OF AREA NUMBER 3 OF THE SCHEDULED AREAS)
- MTR STATION ABOVE GROUND ENTRANCES
- MTR UNDERGROUND STRUCTURES/TUNNELS
- MTR VENTILATION SHAFTS
- MTR ABOVE GROUND STRUCTURES/VIADUCTS
- LINE DRAINAGE SUMP
- ABANDONED ACCESS ADIT & SHAFT
- STRUCTURES LESS THAN 1m BELOW GROUND
- STRUCTURES 1m TO 3m BELOW GROUND
- WELL WATER FEED SYSTEM
- MTR COOLING WATER MAINS
- DRAINAGE
- WATER PIPE
- RAILWAY FENCE
- COMMUNICATION CONTROL CABLE
- 2 NOS. 3.3KV POWER CABLE
- TRACK CENTRE LINE

REV.	DESCRIPTION	BY	DATE	APPROVED
AREA NUMBER 3 OF THE SCHEDULED AREAS SCHEDULE 5 BUILDINGS ORDINANCE (CAP. 123)				
KOWLOON-CANTON RAILWAY CORPORATION RAILWAY PROTECTION PLAN AUSTIN TO NAM CHEONG				
SCALE 1 : 1000 @ A2		DRAWING NO. MTR/RP/1807		REV. A
DATE JUL 2020		MTR CAD REFERENCE NO. MTR_RP_1807.dgn		

Signed:
L. WONG Wai-lun, Michael
Secretary for Development
Date: 29 JUL 2021